

MOBILITY; SHOWROOM 64
BEFORE

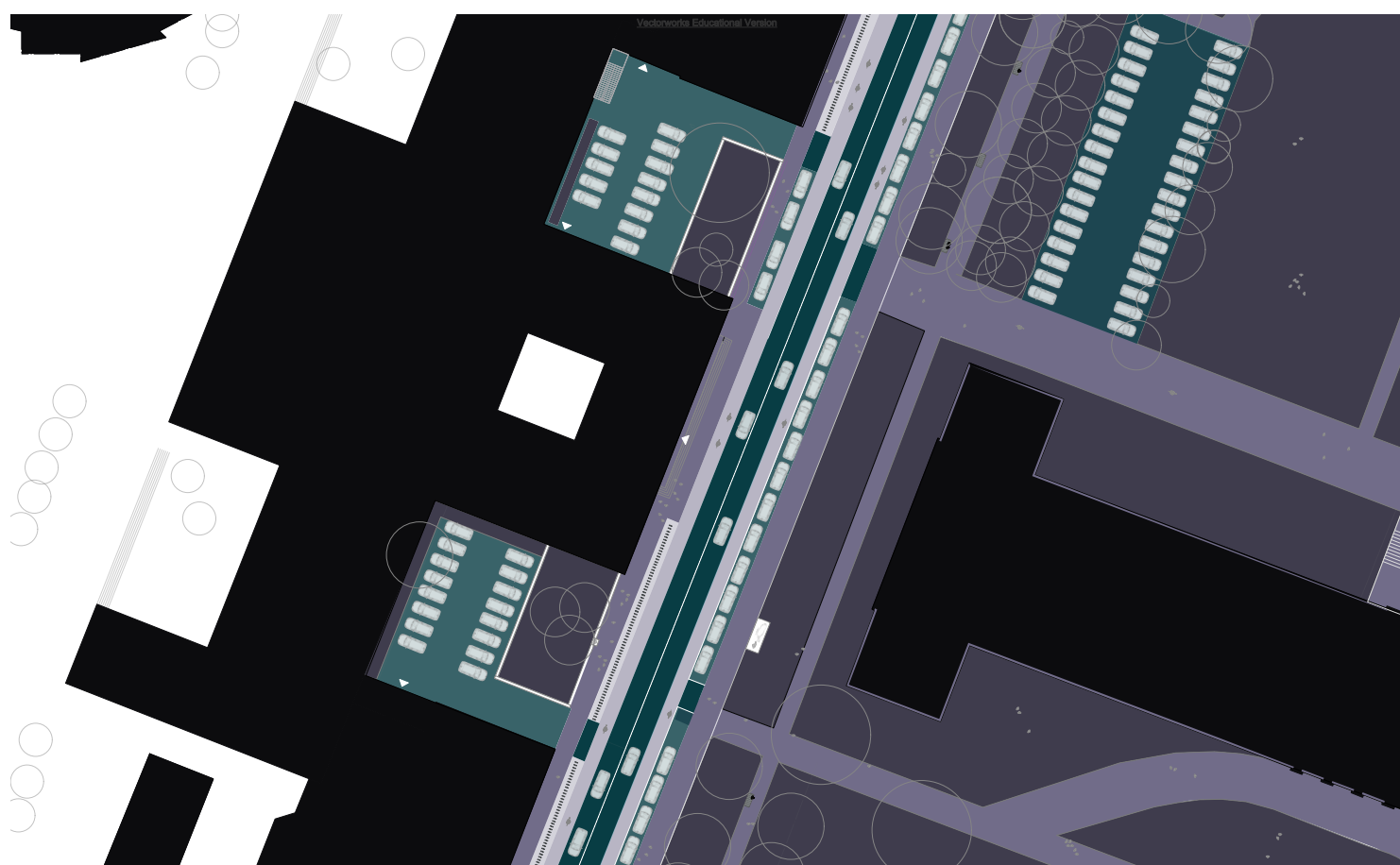


Fig.1: Showroom – zone plan 1:500 (downloaded)

Project
Showroom 64
Year
2022

Modal split

Cars: 34%
Public Transport: 24%
Bikes: 18%
Pedestrians: 24%

Zoning

Cars: 3.245,1m², 24,5%
Bikes: 743,5m², 5,6%
Pedestrians: 9283,587m², 69,9%

Parking lots

Cars permanent: ~90 pcs.
Cars temporary: 2 pcs.
Bikes: ~ 88 pcs.

Master's Project Landscape Architecture I+II-III; WS22/23; Streets >> Boulevards - Designs and Strategies to remake the streets of Munich's Kunstareal
Group: 2; Huber, Sarah; Mirjic, Ines
Chair of landscape architecture and public space; Prof. Dipl.-Ing. Regine Keller
Dipl.-Ing. Felix Lüdcke, M.Eng. Simon Stiegler, M.A. Ana Rivas (integration), B.Sc. Daniel Wolfram (tutoring)

MOBILITY; SHOWROOM 64
EXPERIMENT

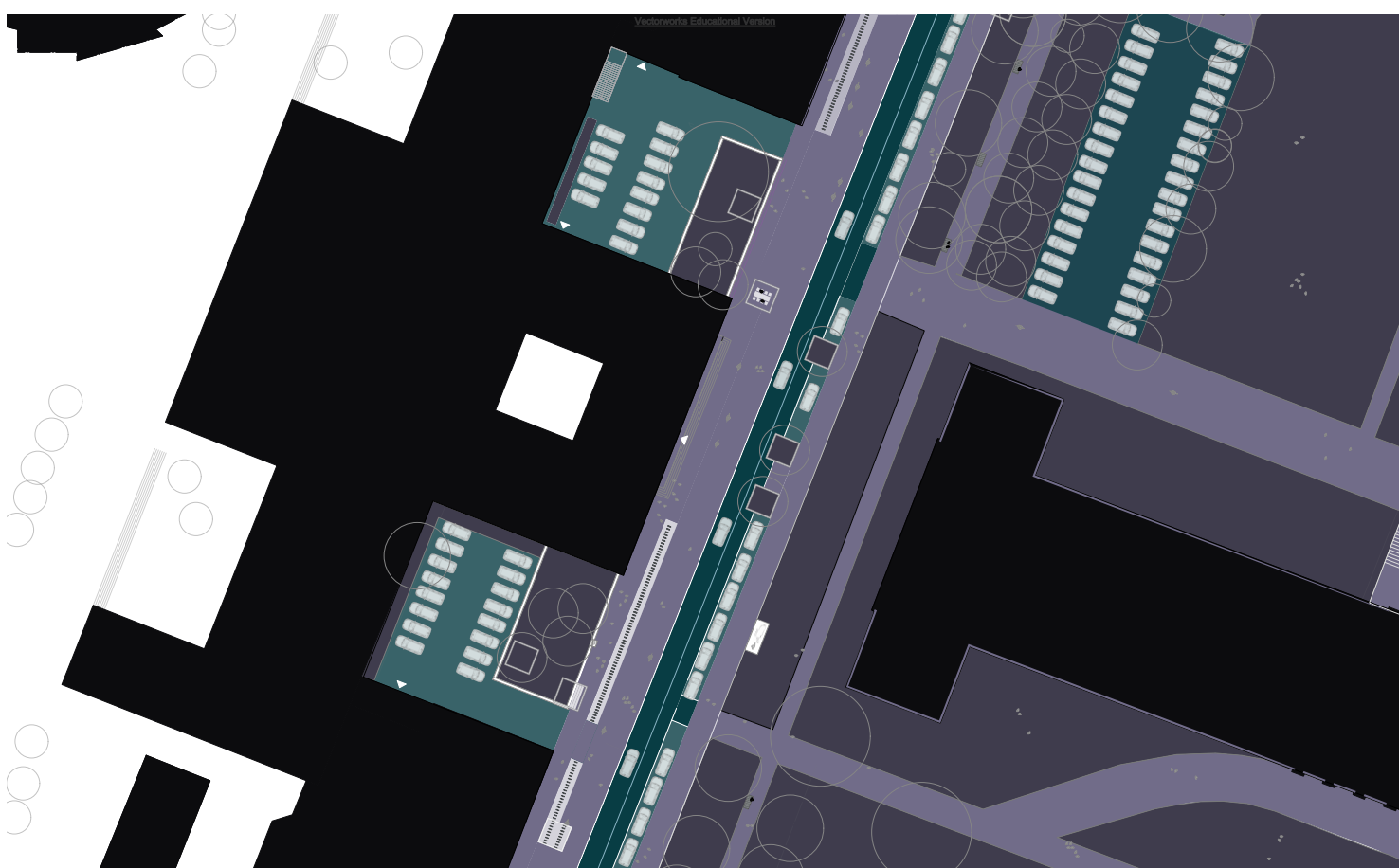


Fig.2: Showroom 64 – zone plan 1:500 (downloaded)

Project
Showroom 64
Year
2024

Modal split

Cars: 20%
Public Transport: 30%
Bikes: 24%
Pedestrians: 26%

Zoning

Cars: 2.993,77m², 22,6%
Bikes: 107,99m², 0,8%
Pedestrians: 10.170,434m², 76,6%

Parking lots

Cars permanent: ~85pcs.
Cars temporary: 0pcs.
Bikes: ~120pcs.

Master's Project Landscape Architecture I+II-III; WS22/23; Streets >> Boulevards - Designs and Strategies to remake the streets of Munich's Kunstareal
Group: 2; Huber, Sarah; Mirjic, Ines
Chair of landscape architecture and public space; Prof. Dipl.-Ing. Regine Keller
Dipl.-Ing. Felix Lüdcke, M.Eng. Simon Stiegler, M.A. Ana Rivas (integration), B.Sc. Daniel Wolfram (tutoring)

MOBILITY; SHOWROOM 64
AFTER

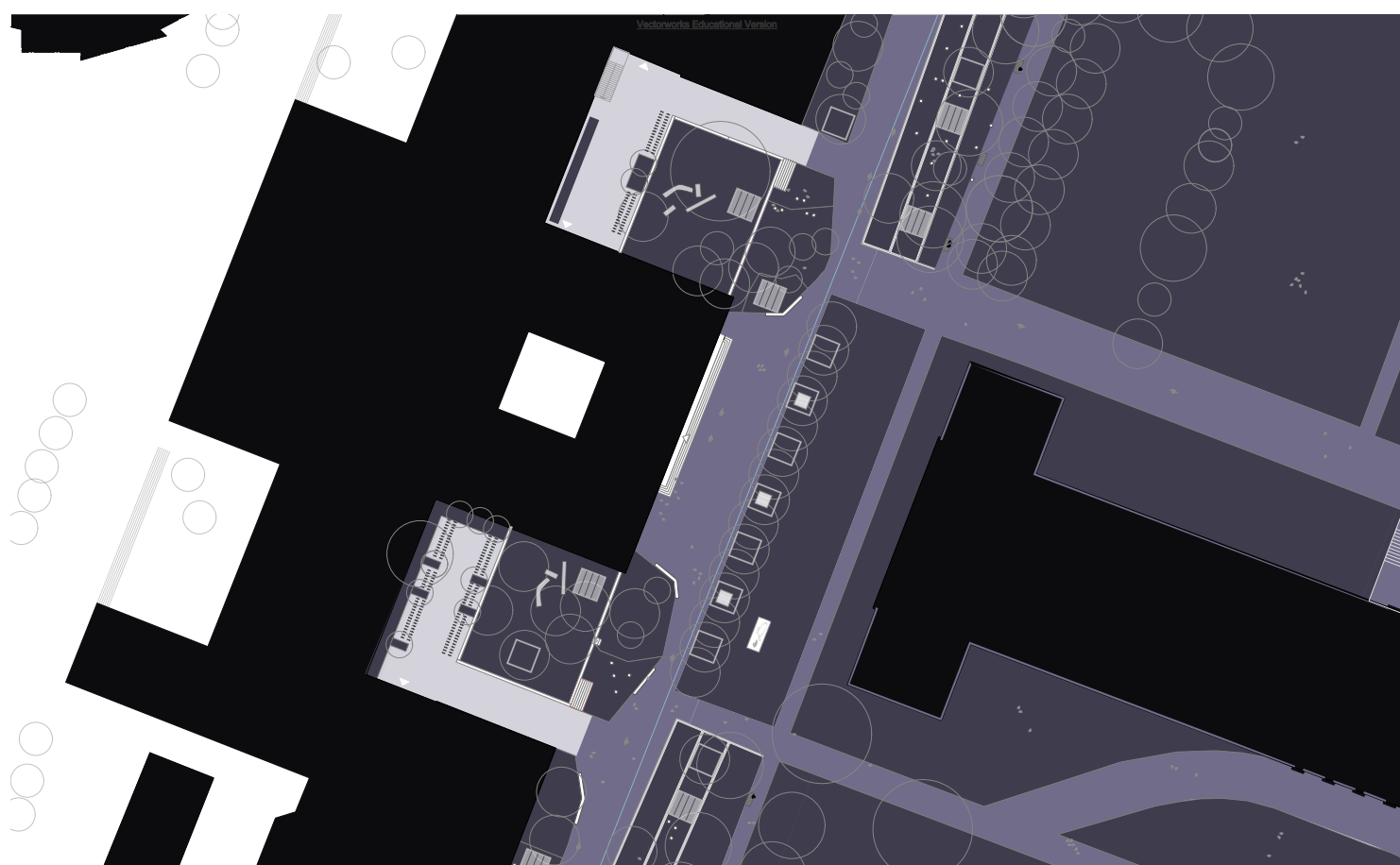


Fig.3: Showroom 64 – zone plan 1:500 (downloaded)

Project
Showroom 64
Year
2030

Modal split

Cars: 5%
Public Transport: 35%
Bikes: 30%
Pedestrians: 30%

Zoning

Cars: 0m², 0%
Bikes: 847,323m², 6,4%
Pedestrians: 12.424,87m², 93,6%

Parking lots

Cars permanent: 0pcs.
Cars temporary: 0pcs.
Bikes: 120pcs.

Master's Project Landscape Architecture I+II-III; WS22/23; Streets >> Boulevards - Designs and Strategies to remake the streets of Munich's Kunstareal
Group: 2; Huber, Sarah; Mirjic, Ines
Chair of landscape architecture and public space; Prof. Dipl.-Ing. Regine Keller
Dipl.-Ing. Felix Lüdcke, M.Eng. Simon Stiegler, M.A. Ana Rivas (integration), B.Sc. Daniel Wolfram (tutoring)

ECOLOGY; SHOWROOM 64
BEFORE

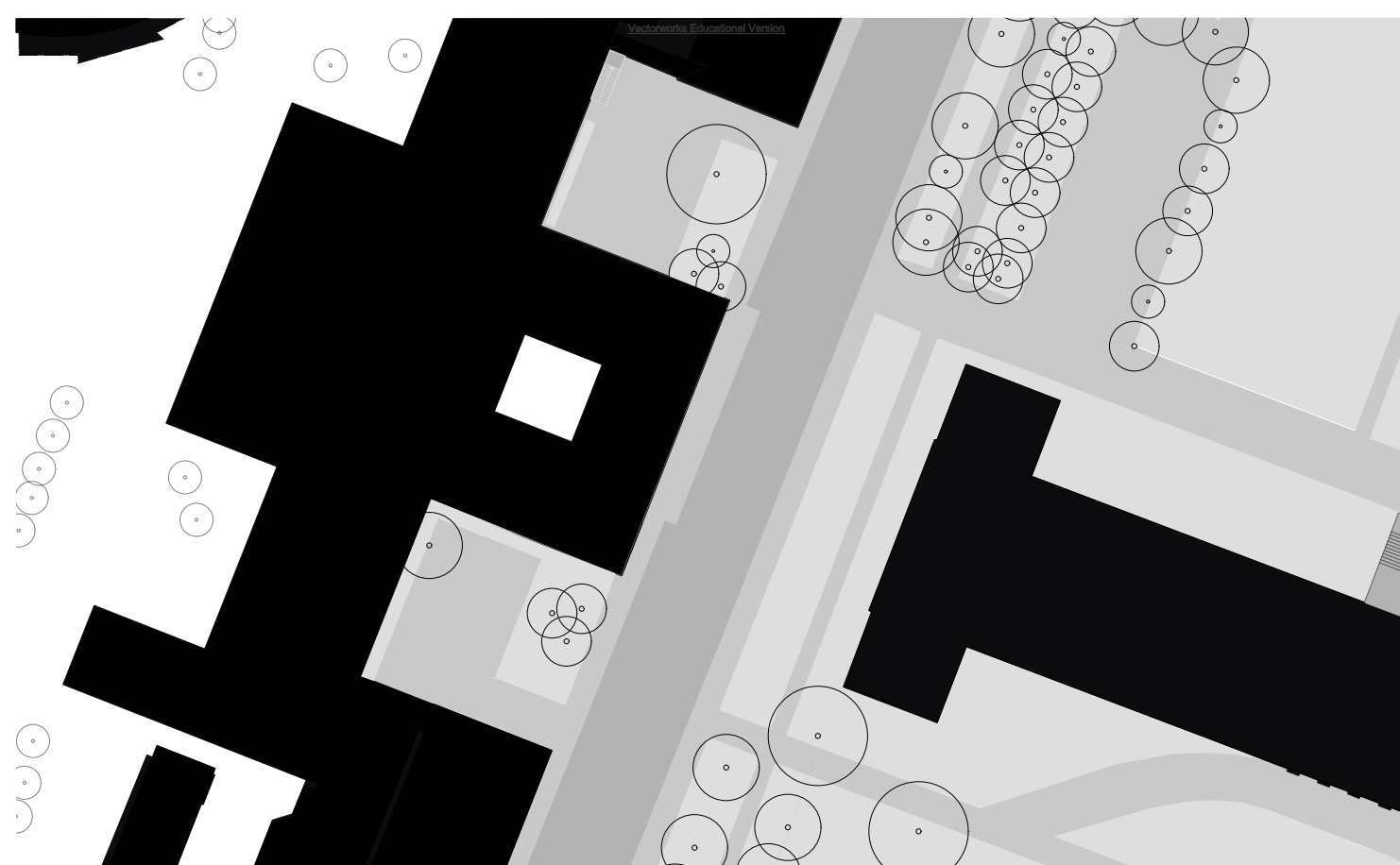


Fig.4: Showroom 64 – zone plan 1:500 (downloaded)

Project
Showroom 64
Year
2022

Surface

fully sealed: 1978,167m², 12,3%
half sealed: 7808,13m², 47,4%
open: 6472,664m², 40,3%

Trees

Existing: 43pcs.
New: 0pcs.

Master's Project Landscape Architecture I+II-III; WS22/23; Streets >> Boulevards - Designs and Strategies to remake the streets of Munich's Kunstareal
Group: 2; Huber, Sarah; Mirjic, Ines
Chair of landscape architecture and public space; Prof. Dipl.-Ing. Regine Keller
Dipl.-Ing. Felix Lüdcke, M.Eng. Simon Stiegler, M.A. Ana Rivas (integration), B.Sc. Daniel Wolfram (tutoring)

ECOLOGY; SHOWROOM 64
EXPERIMENT

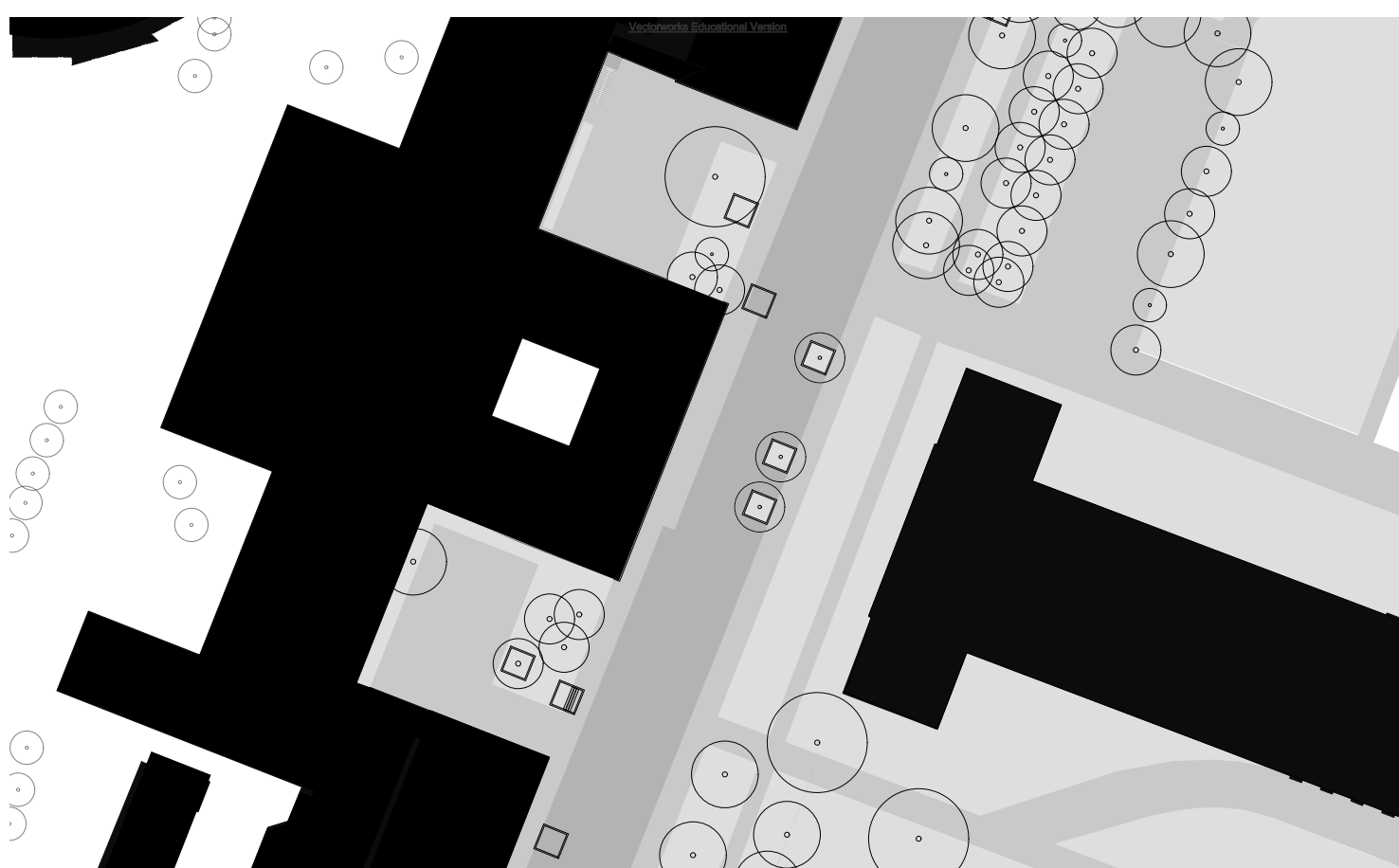


Fig.5: Showroom 64 – zone plan 1:500 (downloaded)

Project
Showroom 64
Year
2024

Surface

fully sealed: 1930,47m², 12%
half sealed: 7808,13m², 47,4%
open: 6520,364m², 40,6%

Trees

Existing: 43pcs.
New: 4pcs.

Master's Project Landscape Architecture I+II-III; WS22/23; Streets >> Boulevards - Designs and Strategies to remake the streets of Munich's Kunstareal
Group: 2; Huber, Sarah; Mirjic, Ines
Chair of landscape architecture and public space; Prof. Dipl.-Ing. Regine Keller
Dipl.-Ing. Felix Lüdcke, M.Eng. Simon Stiegler, M.A. Ana Rivas (integration), B.Sc. Daniel Wolfram (tutoring)

ECOLOGY; SHOWROOM 64
AFTER

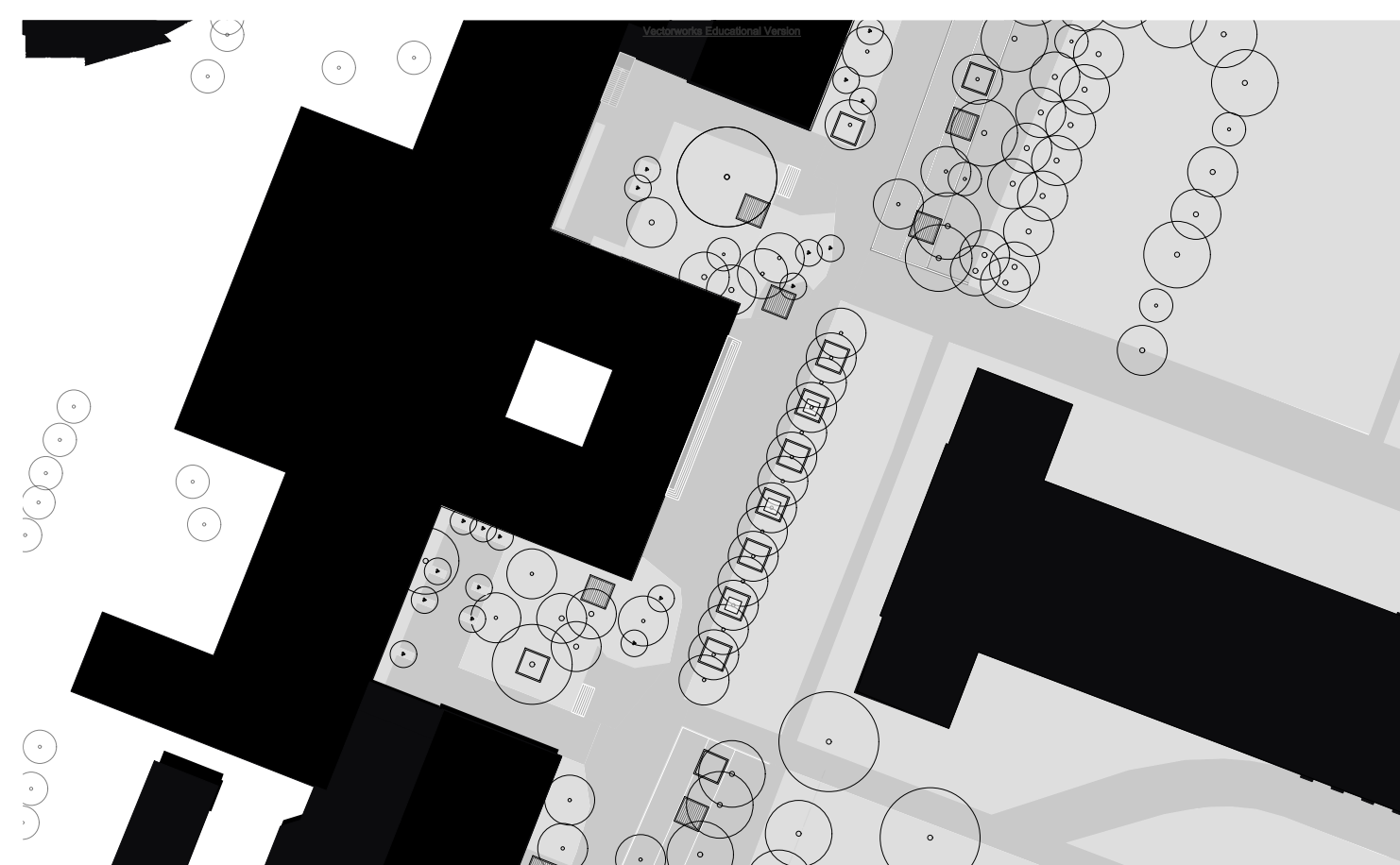


Fig.6: Showroom 64 – zone plan 1:500 (downloaded)

Project
Showroom 64
Year
2030

Surface

fully sealed: 0m², 0%
half sealed: 7811,48m², 48,6%
open: 6247,47m², 51,4%

Trees

Existing: 47pcs.
New: 44pcs.

Master's Project Landscape Architecture I+II-III; WS22/23; Streets >> Boulevards - Designs and Strategies to remake the streets of Munich's Kunstareal
Group: 2; Huber, Sarah; Mirjic, Ines
Chair of landscape architecture and public space; Prof. Dipl.-Ing. Regine Keller
Dipl.-Ing. Felix Lüdcke, M.Eng. Simon Stiegler, M.A. Ana Rivas (integration), B.Sc. Daniel Wolfram (tutoring)

URBANITY; SHOWROOM 64
BEFORE

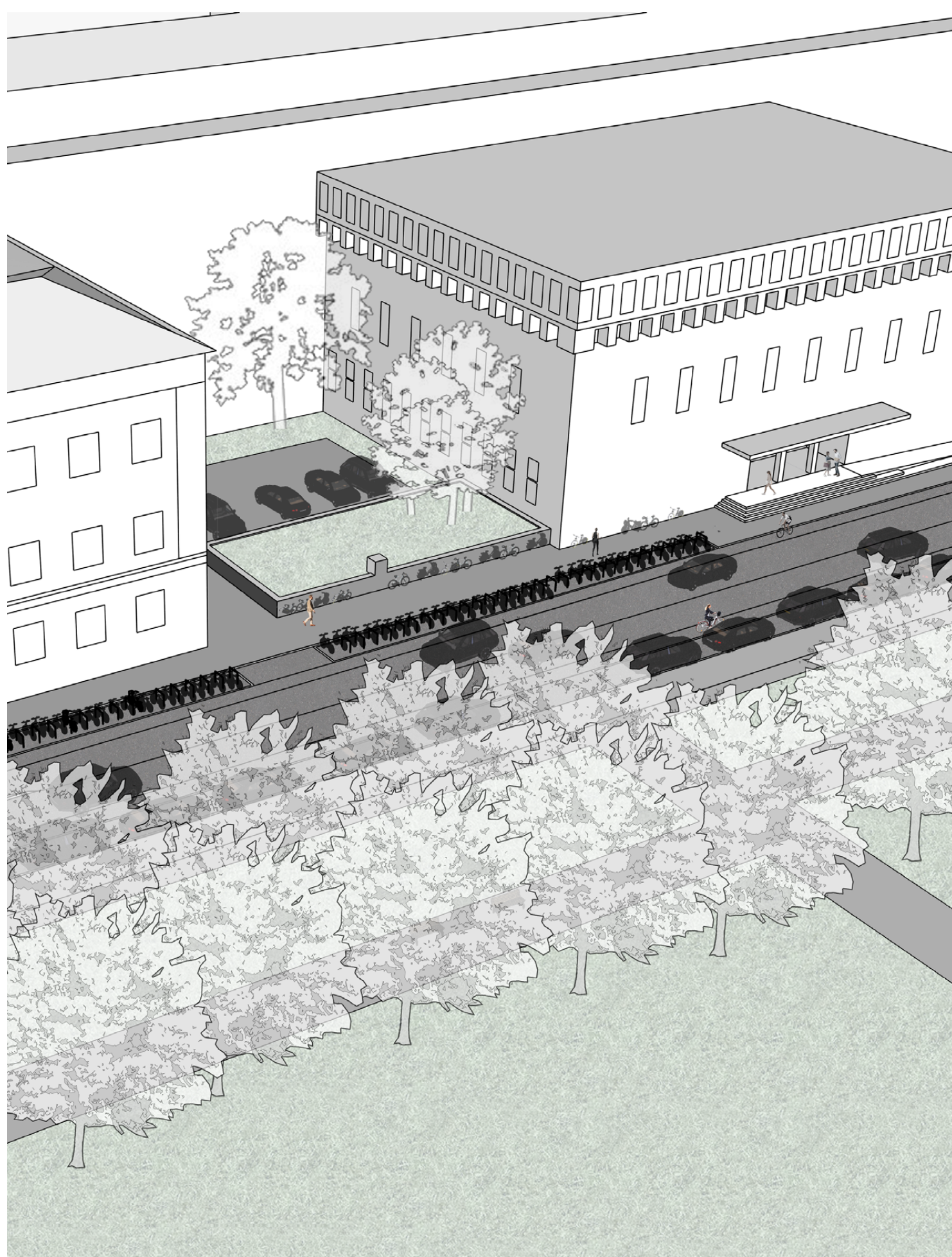


Fig.7: Showroom 64 - Isometric view

Master's Project Landscape Architecture I+II-III; WS22/23; Streets >> Boulevards - Designs and Strategies to remake the streets of Munich's Kunstareal
Group: 2; Huber, Sarah; Mirjic, Ines
Chair of landscape architecture and public space; Prof. Dipl.-Ing. Regine Keller
Dipl.-Ing. Felix Lüdcke, M.Eng. Simon Stiegler, M.A. Ana Rivas (integration), B.Sc. Daniel Wolfram (tutoring)

URBANITY; SHOWROOM 64
EXPERIMENT

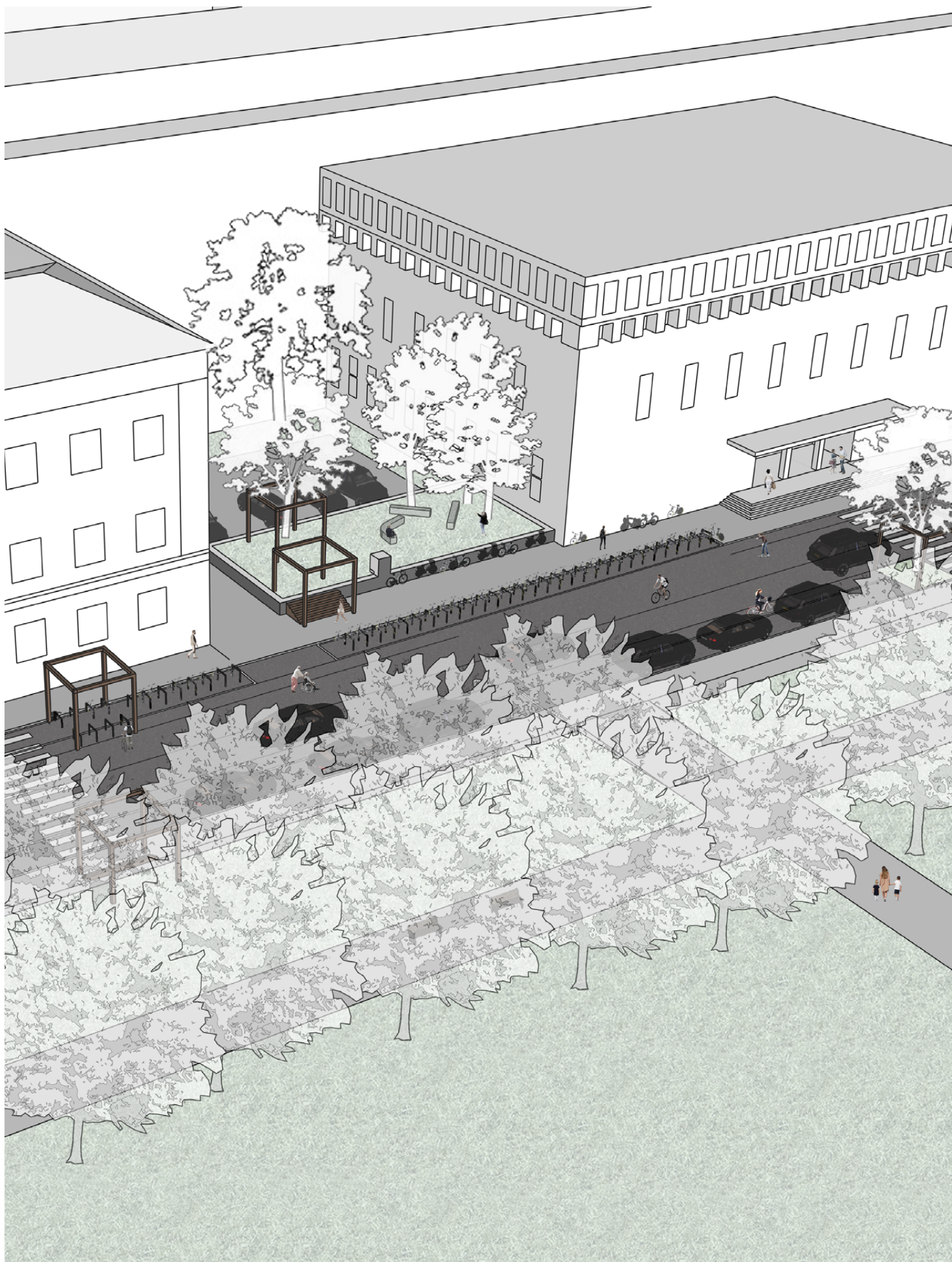


Fig.8: Showroom 64 - Isometric view

Master's Project Landscape Architecture I+II-III; WS22/23; Streets >> Boulevards - Designs and Strategies to remake the streets of Munich's Kunstareal
Group: 2; Huber, Sarah; Mirjic, Ines
Chair of landscape architecture and public space; Prof. Dipl.-Ing. Regine Keller
Dipl.-Ing. Felix Lüdcke, M.Eng. Simon Stiegler, M.A. Ana Rivas (integration), B.Sc. Daniel Wolfram (tutoring)

URBANITY; SHOWROOM 64
AFTER

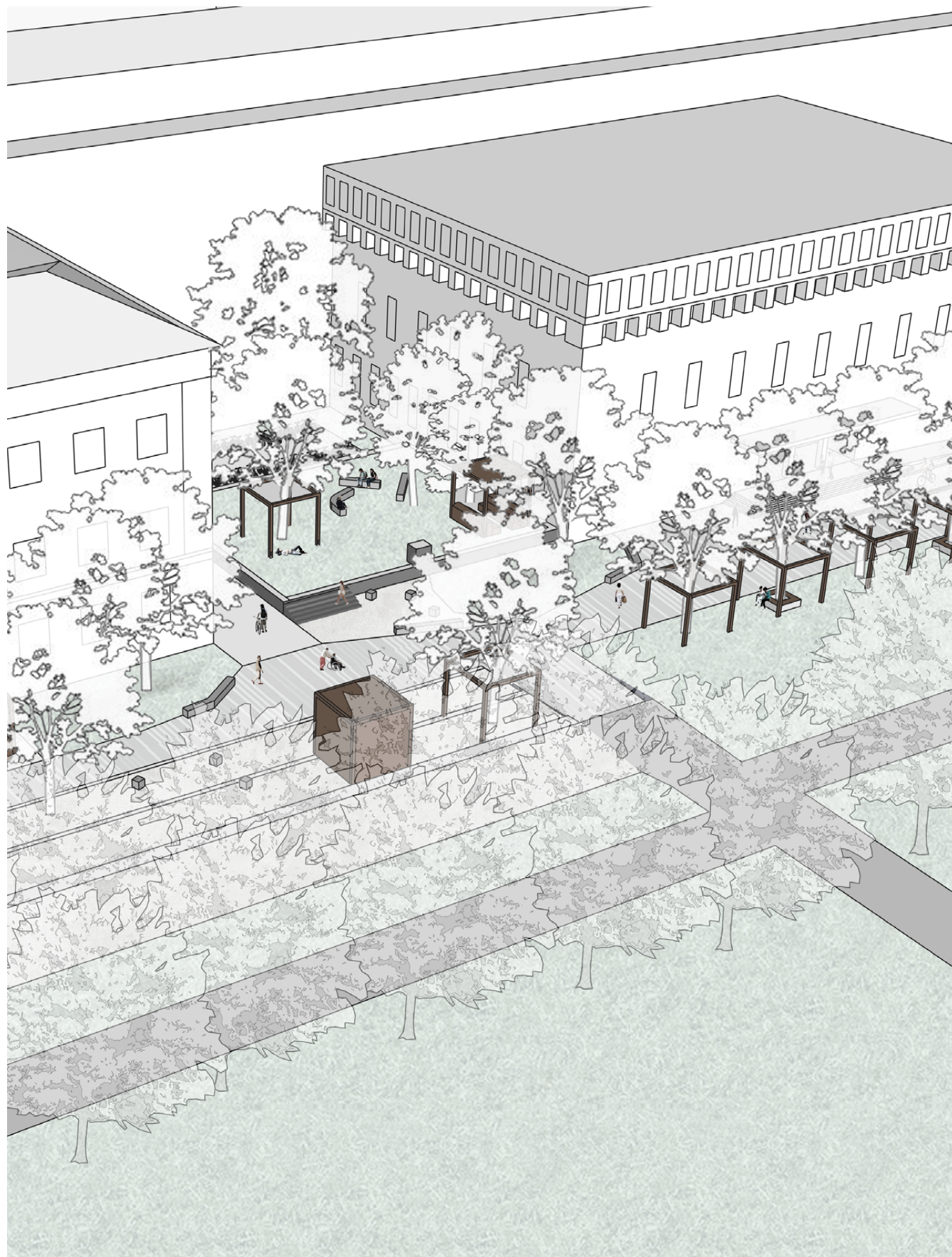


Fig.9: Showroom 64 - Isometric view

Master's Project Landscape Architecture I+II-III; WS22/23; Streets >> Boulevards - Designs and Strategies to remake the streets of Munich's Kunstareal
Group: 2; Huber, Sarah; Mirjic, Ines
Chair of landscape architecture and public space; Prof. Dipl.-Ing. Regine Keller
Dipl.-Ing. Felix Lüdcke, M.Eng. Simon Stiegler, M.A. Ana Rivas (integration), B.Sc. Daniel Wolfram (tutoring)