

ZUKUNFTSSPEICHER

Isabella de Andrade Adauto Costa
Lehrstuhl für Landschaftsarchitektur und industrielle Landschaft, Prof. Udo Weilacher



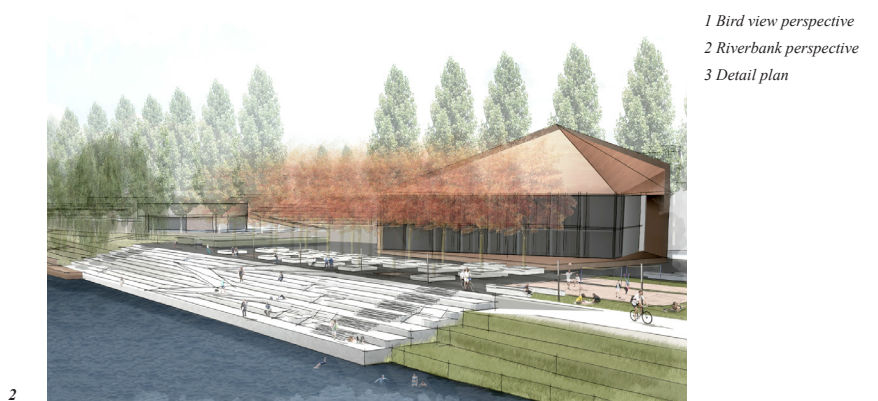
1

ZUKUNFTSSPEICHER

People come to the Zukunftsspeicher campus and finally discover and rediscover the east of Hamburg. The new research and production campus in the core of Hamburg East is the starting point to the eastern development. The mixed use proposal will not just revive the site in Rothenburgsort and Billbrook to its citizens and new visitors, but will also provide a place where companies and research facilities can cooperate to plan a more sustainable future.

Main challenges were to structure the final design integrating the existing structures originally from the site and to overcome the barriers within the site, because the site was an isolated island in the middle of an industry complex area. Only after identifying the different layers of information and deciding which stories to tell, it was possible to transform and integrate its existing structures into the final design, without letting them lose their special qualities. The goal was to tell a new story, but still allow people to read the underline original history of the site.

The vegetation system is the key that holds the other systems together. Because of the landscape, the site is connected back to the city. The existing elements and new access system, build up into an ellipse shape, creating a strong landmark statement, an entrance to the campus and orientation throughout the site, besides being a symbol of innovation. Innovation because knowledge is cyclical, an imperfect infinite loop of reinventions. People are welcome to enjoy!



2

1 Bird view perspective
2 Riverbank perspective
3 Detail plan



3