

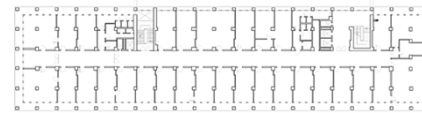
# Summary



Title:	<b>Niemals nur oberflächlich! Zu Material, Technik und Ästhetik von Architekturoberfläche. Eine Einführung</b> <b>Case study:</b> <i>E.U.R. District (E42) Rome (Italy)</i>
Chair:	<b>Chair of Conservation-Restoration, Art Technology and Conservation Science</b>  <b>Prof. Thomas Danzl, Arch. Dr. Roberta Fonti</b>
Language:	<b>English</b> support (i.e. learning materials in German/English, individual review meetings in English)
Study level:	<b>Master</b>
Kick off:	20/10/2021
Meetings:	<b>Every Wednesday</b>
Interm. Reviews:	24/11; 19/01
Final Presentation:	16/03
ECTS:	Credits (15 ECTS)
Remarks:	<b>In collaboration with Arch. Francesco Innamorati at EUR Spa</b> Best Works will be donated to <b>EUR S.p.a.</b> as possible ideas for the planned refurbishment of the <b>"Palazzo Ristorante" by Ettore Rossi</b>

## Case Study

### Palazzo Ristorante (1938 – 1942)

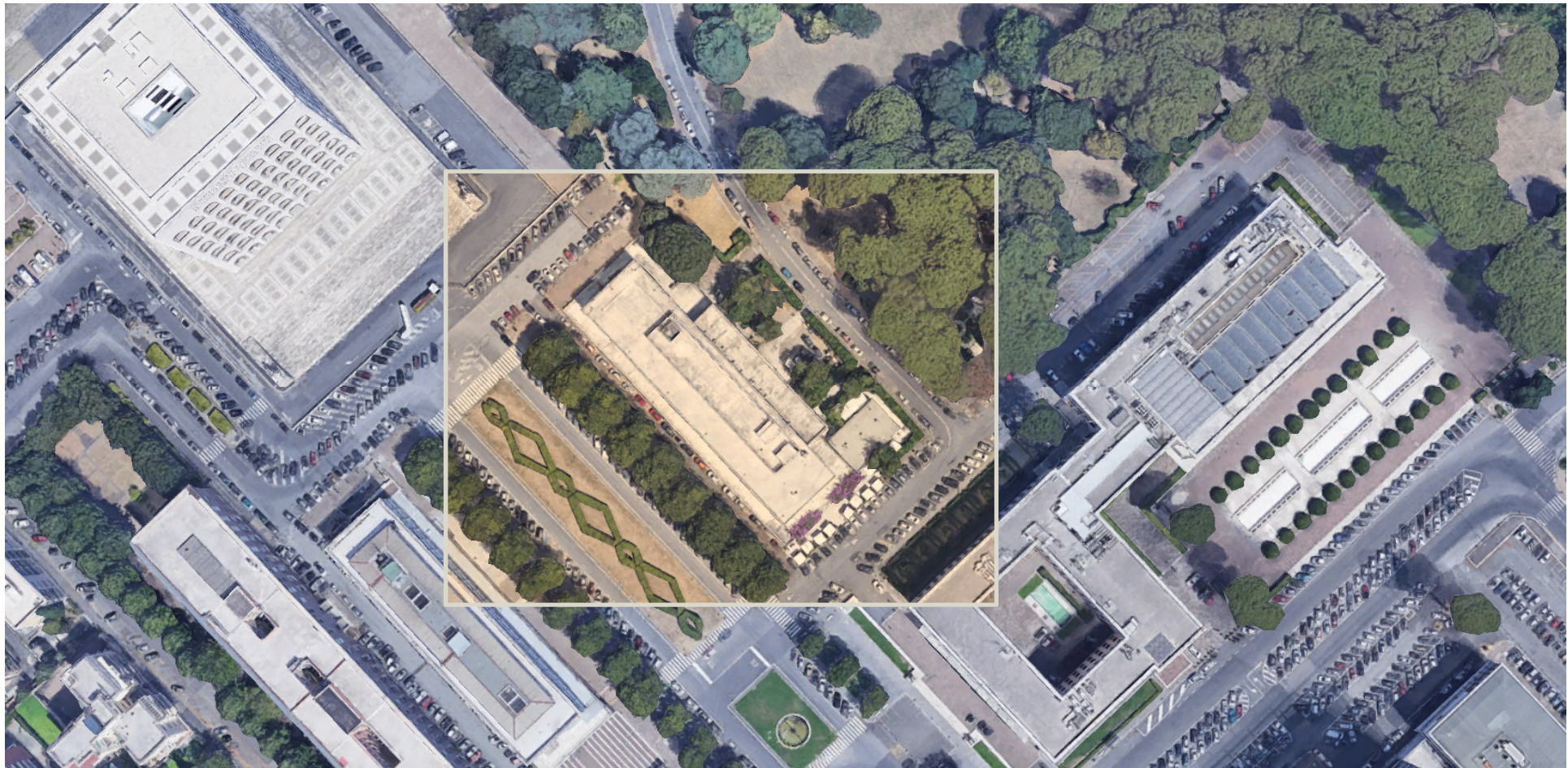


E.U.R. District (E42) Rome  
(Italy) *Palazzo Ristorante*



**Architect: Ettore Rossi**  
(Fano, 1894 – Modena, 1968)

**A Troublesome Inheritance.  
A Dissonant Heritage.**



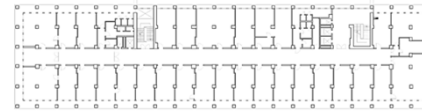


## Case Study

### E.U.R. District of Rome (Expo 1942)



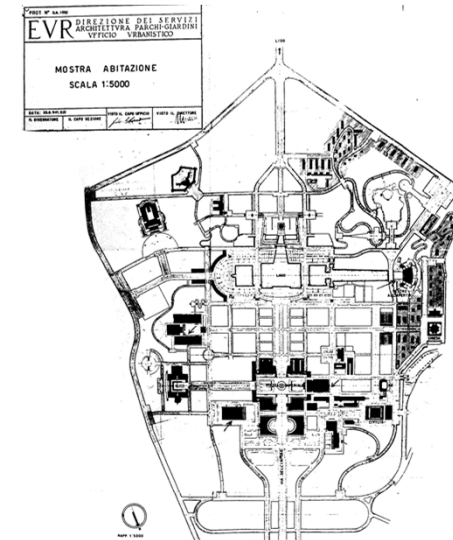
© Google Earth



E.U.R. District (E42) Rome  
(Italy) *Palazzo Ristorante*



A Troublesome Inheritance.  
A Dissonant Heritage.



1941

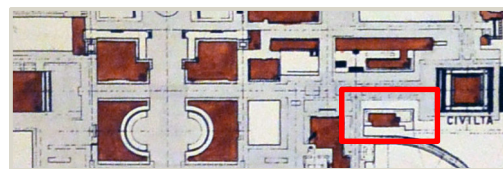
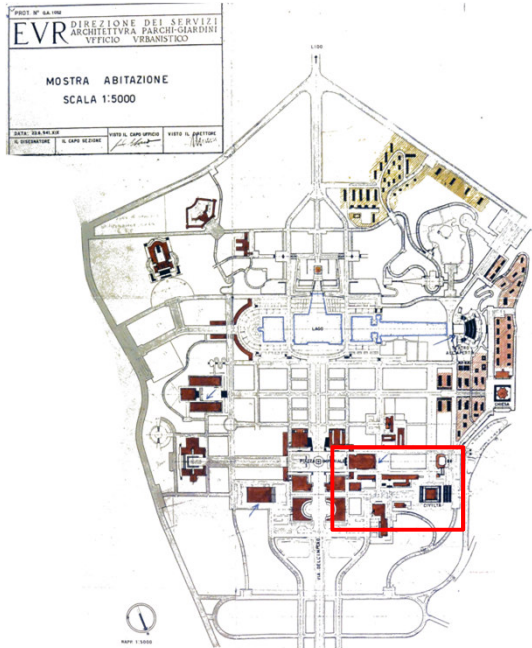


© Fondo Piacentini, University of Florence Map, 23. 06. 1941

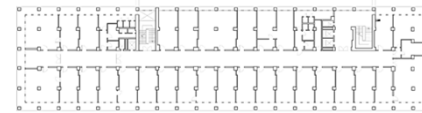


# Case Study

## E.U.R. District of Rome (Expo 1942)



© Fondo Piacentini, University of Florence Map, 23. 06. 1941 (Fonti, 2020)



E.U.R. District (E42) Rome  
(Italy) Palazzo Ristorante



A Troublesome Inheritance. A Dissonant Heritage.

## Palazzo Ristorante (1938 – 1942) by Ettore Rossi

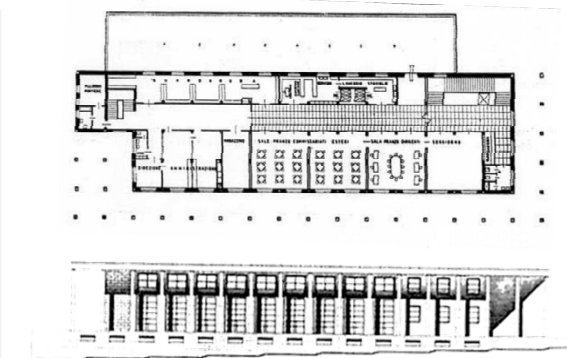
Listed as a Monument  
(year, 2004)



© Private Archive, EUR Spa



© Private Archive EUR Spa



© L'Architettura, Rivista del Partito Fascista Italiano, December 1938, Special Issue



## Task 1 Main Façade

### Design Problem

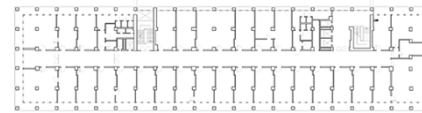
1.1 The main entrance | 1.2 The counter façade | 1.3 The rail



**Main entrance** located at one of the lateral elevations (year, 2021)



**Original Main entrance** locked and unused (year, 2021)



E.U.R. District (E42) Rome  
(Italy) *Palazzo Ristorante*



### Conservation-Restoration PROJECT

After 1960s repurposing  
*into an Office Space*

**Palazzo Ristorante (1961 – 1963)**  
by Renato Venturi e Guido Marinucci



© Private Archive, EUR Spa

Today – Headquarter of *Roma Capitale's* Offices for Urban Design and Administration (M5s)

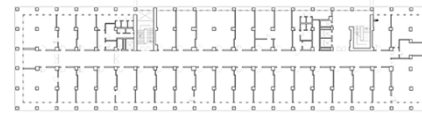
## Task 1 Main Façade

### Design Problem

1.1 The main entrance | 1.2 The counter façade | 1.3 The rail



### Before – Stone Cladding

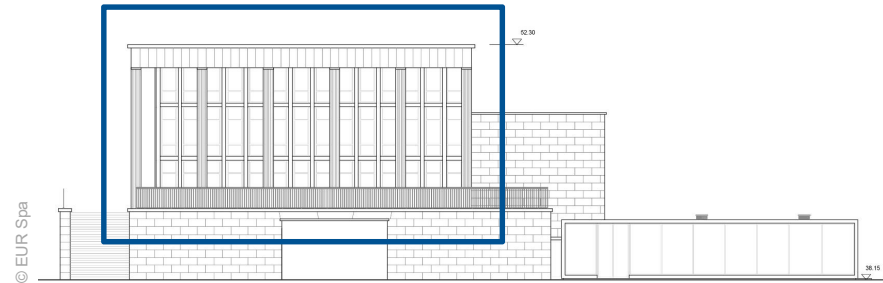


E.U.R. District (E42) Rome  
(Italy) *Palazzo Ristorante*



### Conservation-Restoration PROJECT

After 1960s repurposing  
*into an Office Space*



### After – Aluminium / Painted profiles





## Task 1 Main Façade

### Design Problem

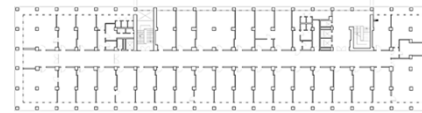
1.1 The main entrance | 1.2 The counter façade | 1.3 The rail



Before – no rail



Before – barriers

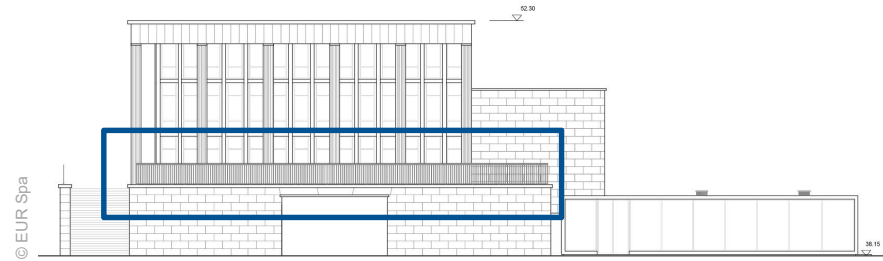


E.U.R. District (E42) Rome  
(Italy) *Palazzo Ristorante*



### Conservation-Restoration PROJECT

After 1960s repurposing  
*into an Office Space*



Today – rail having flat profiles



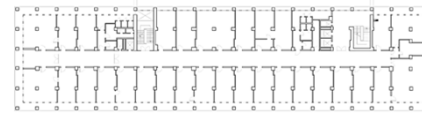
## Task 2 The Peristyle

### Design Problem

#### Original Design



© Private Archive, EUR Spa

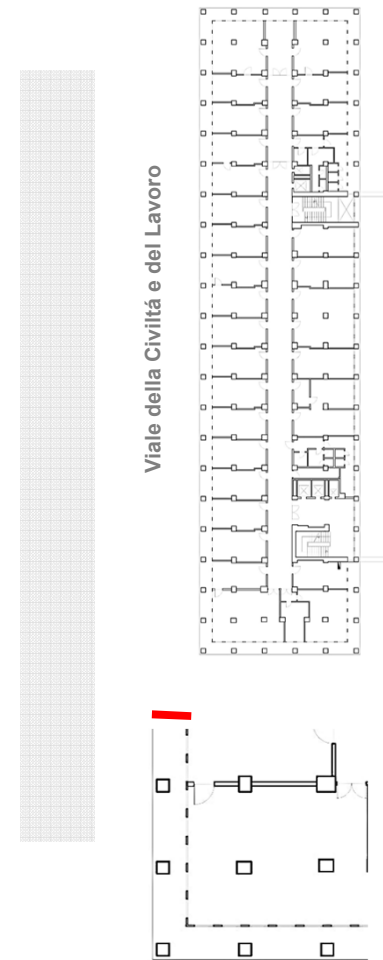


E.U.R. District (E42) Rome  
(Italy) Palazzo Ristorante



### Conservation-Restoration PROJECT

After 1960s repurposing  
*into an Office Space*

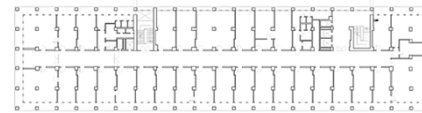


© EUR Spa



## Task 2 The Peristyle

### Design Problem

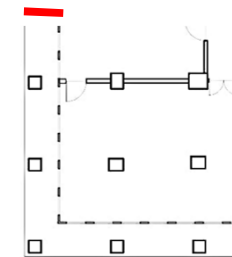
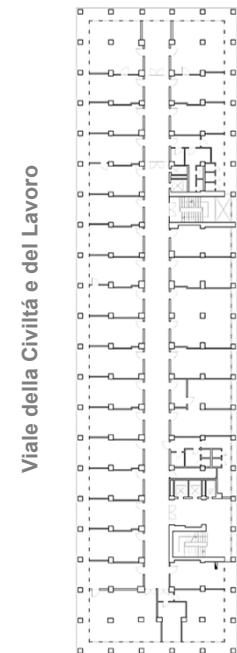


E.U.R. District (E42) Rome  
(Italy) *Palazzo Ristorante*



### Conservation-Restoration PROJECT

After 1960s repurposing  
*into an Office Space*



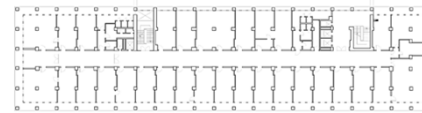
© EUR Spa



## Task 3 The External Patio

### Design Problem

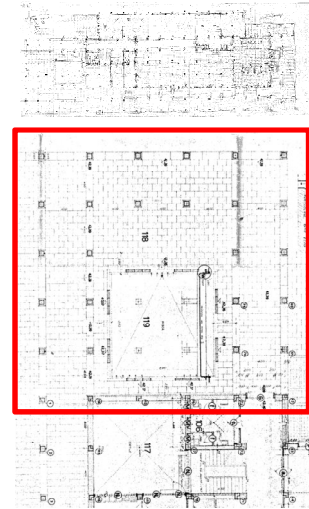
#### Original Design



E.U.R. District (E42) Rome  
(Italy) *Palazzo Ristorante*

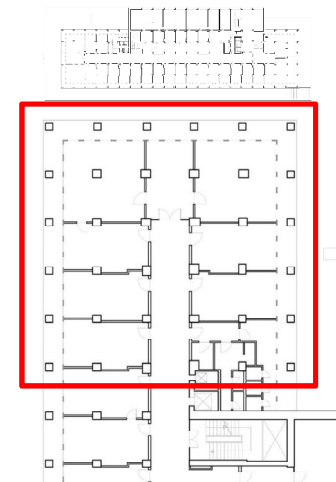


### Conservation-Restoration PROJECT



© Private Archive, EUR Spa

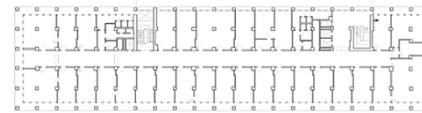
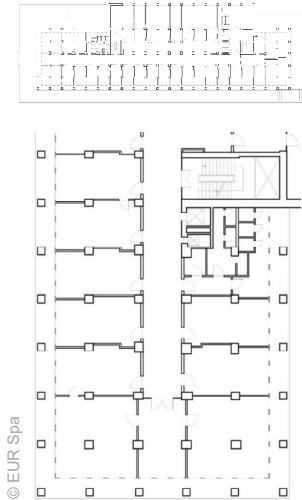
After 1960s repurposing  
into *Office Space*





## Task 3 The External Patio

### Design Problem



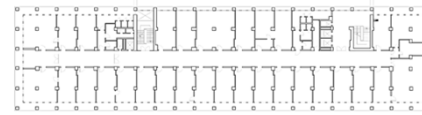
E.U.R. District (E42) Rome  
(Italy) *Palazzo Ristorante*



### Conservation-Restoration PROJECT



## Task 3 The External Patio



E.U.R. District (E42) Rome  
(Italy) Palazzo Ristorante



### Conservation Problems

### Conservation-Restoration PROJECT



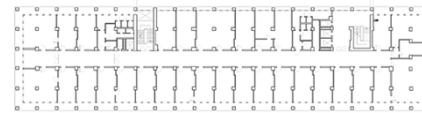
Elevation



Floor



## Task 4 The Staircase



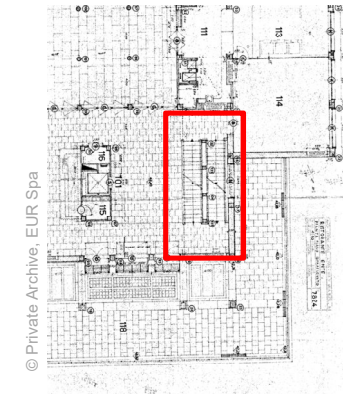
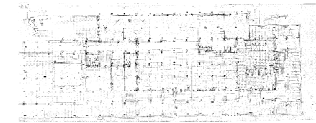
E.U.R. District (E42) Rome  
(Italy) *Palazzo Ristorante*



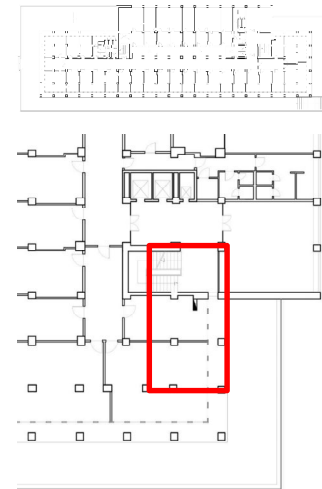
### Original Design



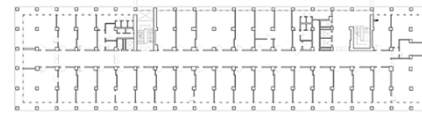
© Private Archive, EUR Spa



After 1960s repurposing  
into *Office Space*



## Task 5 The Pillars



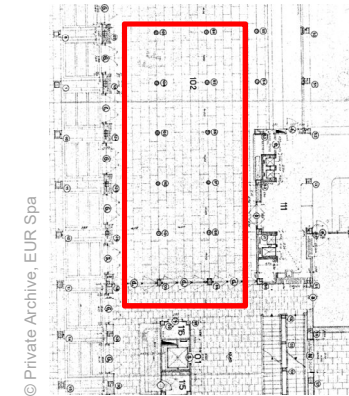
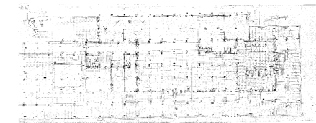
E.U.R. District (E42) Rome  
(Italy) *Palazzo Ristoranti*



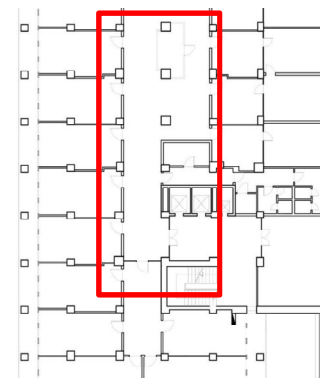
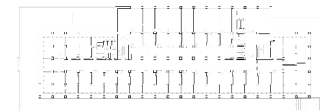
### Original Design



© Private Archive, EUR Spa

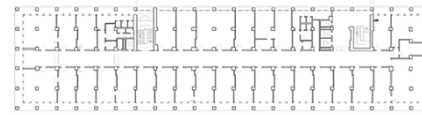


After 1960s repurposing  
into *Office Space*





## Task 6 The roof Terrace



E.U.R. District (E42) Rome  
(Italy) *Palazzo Ristorante*



### Design challenge

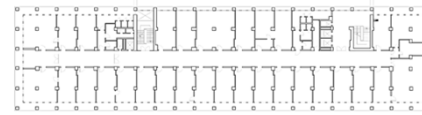


### Conservation Problem



Marble

## Task 6 The roof Terrace



E.U.R. District (E42) Rome  
(Italy) Palazzo Ristorante



### Design challenge



### Conservation Problem

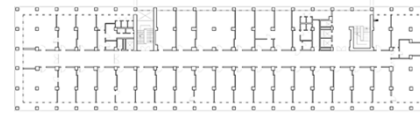


Marble

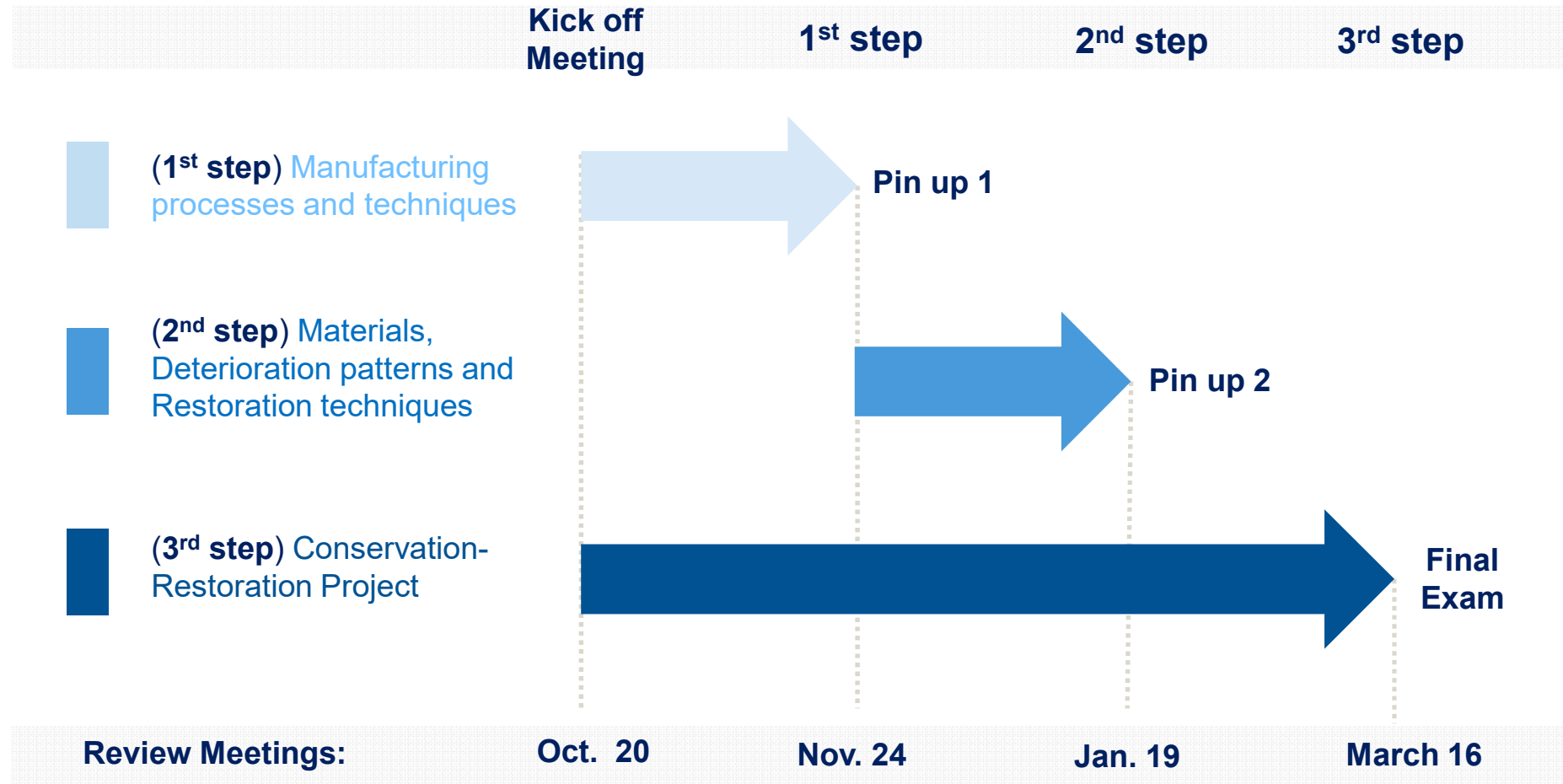




## Time Schedule



E.U.R. District (E42) Rome  
(Italy) *Palazzo Ristorante*



Excursion to Rome (Italy), **10-15 December 2021**

*not compulsory for the successful completion of the course*