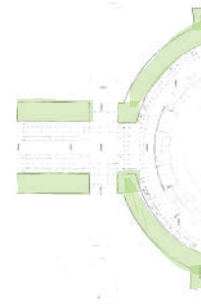


Title:	The Beauty of Architectural surfaces Niemals nur oberflächlich! <i>Zu Material, Technik und Ästhetik von Architekturoberfläche. Eine Einführung</i> Case study: E.U.R. District (E42), Rome, Italy Palazzo Mostra dell'Agricoltura e Bonifiche by Giuseppe Samonà
Chair:	Chair of Conservation-Restoration, Art Technology and Conservation Science Prof. Thomas Danzl, Arch. Dr. Roberta Fonti
Language:	English <i>support (i.e. learning materials in English, individual review meetings in English)</i>
Study level:	Master
Kick off:	19/10/2022
Meetings:	Every Wednesday , frontal lectures – Room, 0503.02.349 Main Campus All week long , Design Studio's space – Room, 4170A@0501 Main Campus
Interm. Reviews:	30/11; 18/01
Final Presentation:	08/03
ECTS:	Credits (15 ECTS)
Remarks:	Excursion to Rome (Italy), 13-17 December 2022 Best Works will be donated to EUR S.p.a. as possible ideas for the planned refurbishment of the "Palazzo Mostra dell'Agricoltura e Bonifiche"

Case Study

Palazzo Mostra dell'Agricoltura e Bonifiche (1939 – 41)

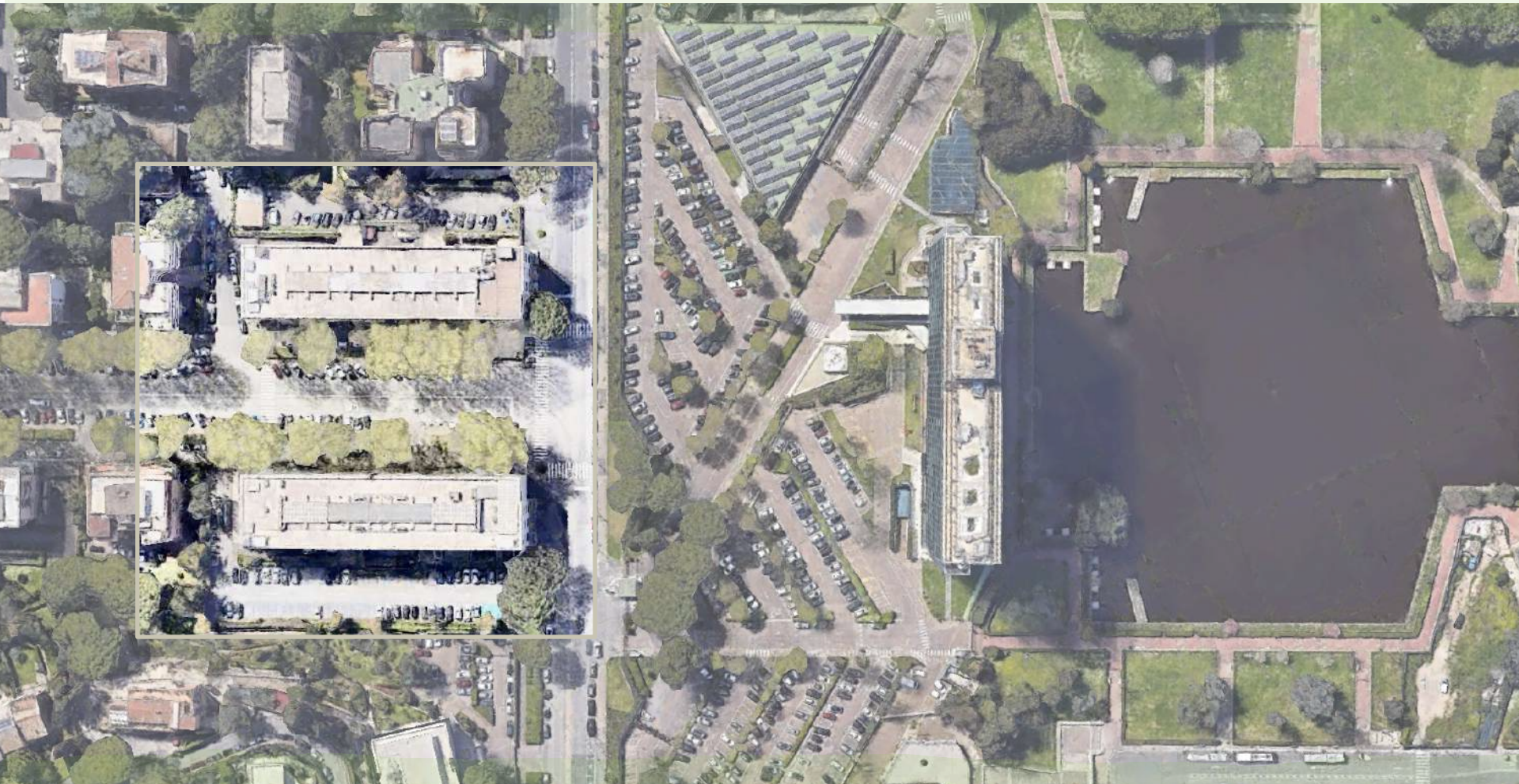
Architect: Giuseppe Samonà
(Palermo, 1898 – Roma, 1983)



E.U.R. District (E42) Rome (Italy)
Palazzo dell'Agricoltura a Bonifiche

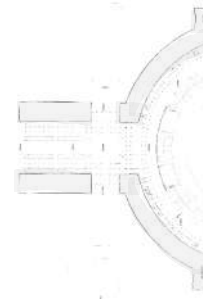


**A Troublesome Inheritance.
A Dissonant Heritage.**



Case Study The Architect

Architect: Giuseppe Samonà
(Palermo, 1898 – Roma, 1983)



E.U.R. District (E42) Rome (Italy)
Palazzo dell'Agricoltura a Bonifiche

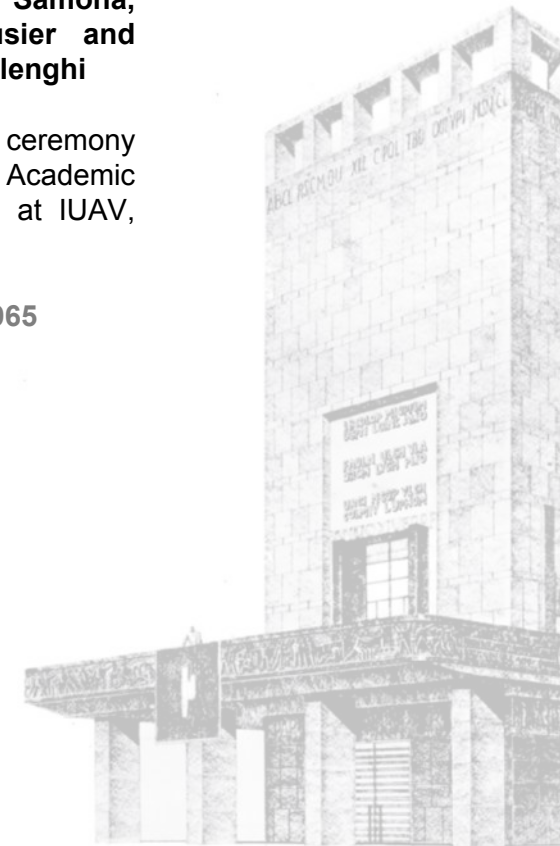


**A Troublesome Inheritance.
A Dissonant Heritage.**

**Giuseppe Samona,
Le Corbusier and
Carlo Ottolenghi**

Opening ceremony
of the Academic
Year 1965 at IUAV,
Venice

12 April 1965



© Private Archive, G. Samonà | Palazzata of Messina, Sicily

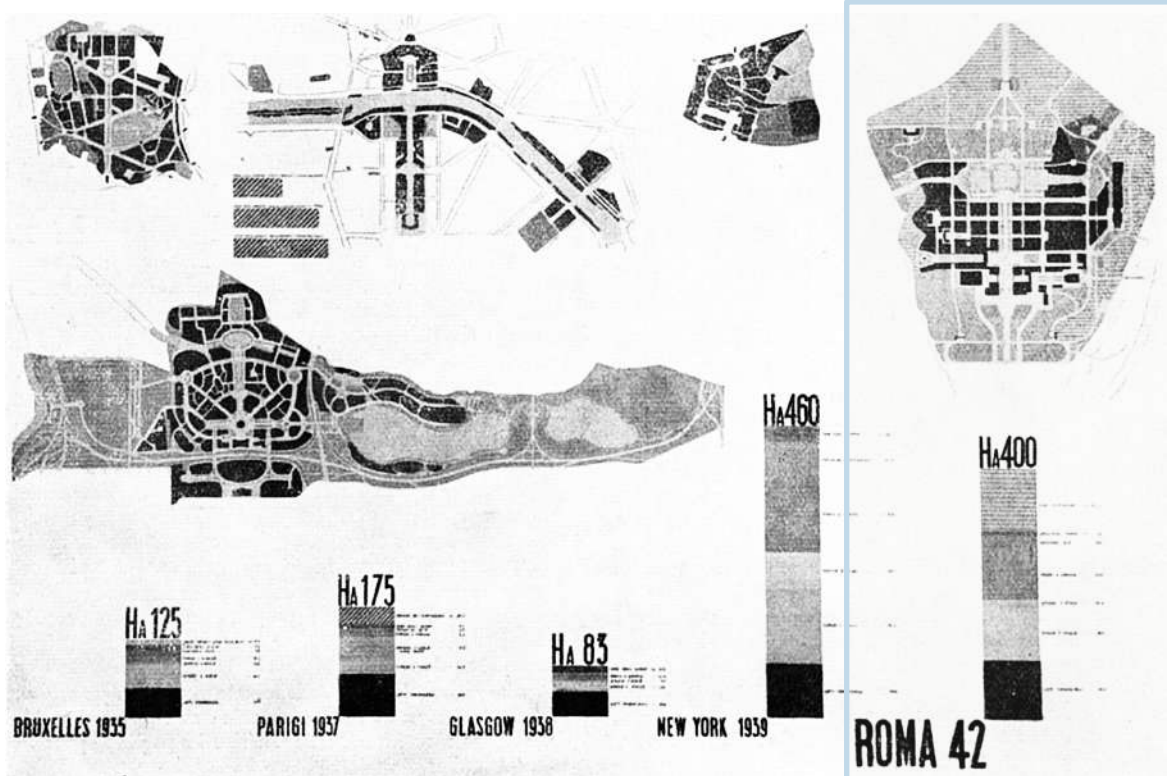
Case Study E.U.R. District of Rome (E 42)

“The Town Plan of the E. 42 has a particular character of its own, which **differences this Exhibition from all previous ones in any part of the world.** It is at once the plan of the great manifestation of Civilisation that Italy will offer in the twentieth of the Fascist Era, and the plan of the new monumental quarter of Rome. [...] This plan, then, **does not draw upon the schemes of the typical French and American Exhibitions,** with great round central areas or circuses, from which wide avenues radiate in every direction [...] it is based instead upon the **schemes of Roman cities** [...] classical chess board system - like Pompeii or ancient Turin.”

Marcello Piacentini (1938)

Superintendent of the Architecture of the E 42

E 42



© L'Architettura, Rivista del Partito Fascista Italiano, December 1938, Special Issue

E.U.R. District (E42) Rome (Italy)
Palazzo dell'Agricoltura a Bonifiche



**A Troublesome Inheritance.
A Dissonant Heritage.**



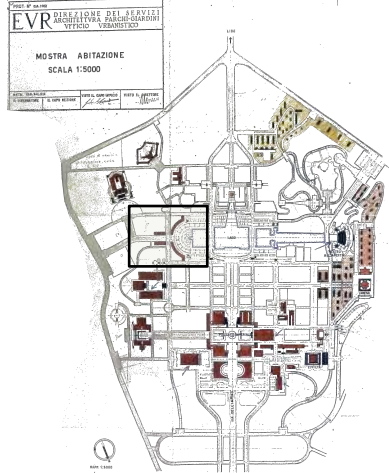
© L'Architettura, Rivista del Partito Fascista Italiano,
December 1938, Special Issue



© Private Archive EUR Spa

Case Study

Palazzo Mostra dell'Agricoltura e Bonifiche (1939-41)



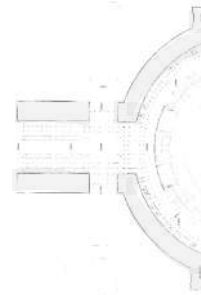
© Fondo Piacentini, University of Florence
Map, 23. 06. 1941 (Fonti, 2020)



© L'Architettura, Rivista del Partito Fascista Italiano,
December 1938, Special Issue

in partnership with
Plinio Marconi (1893-1974)
Guido Viola (1895 – 1984)

*Arch. Plinio Marconi
G. Viola
Scuola di Architettura*

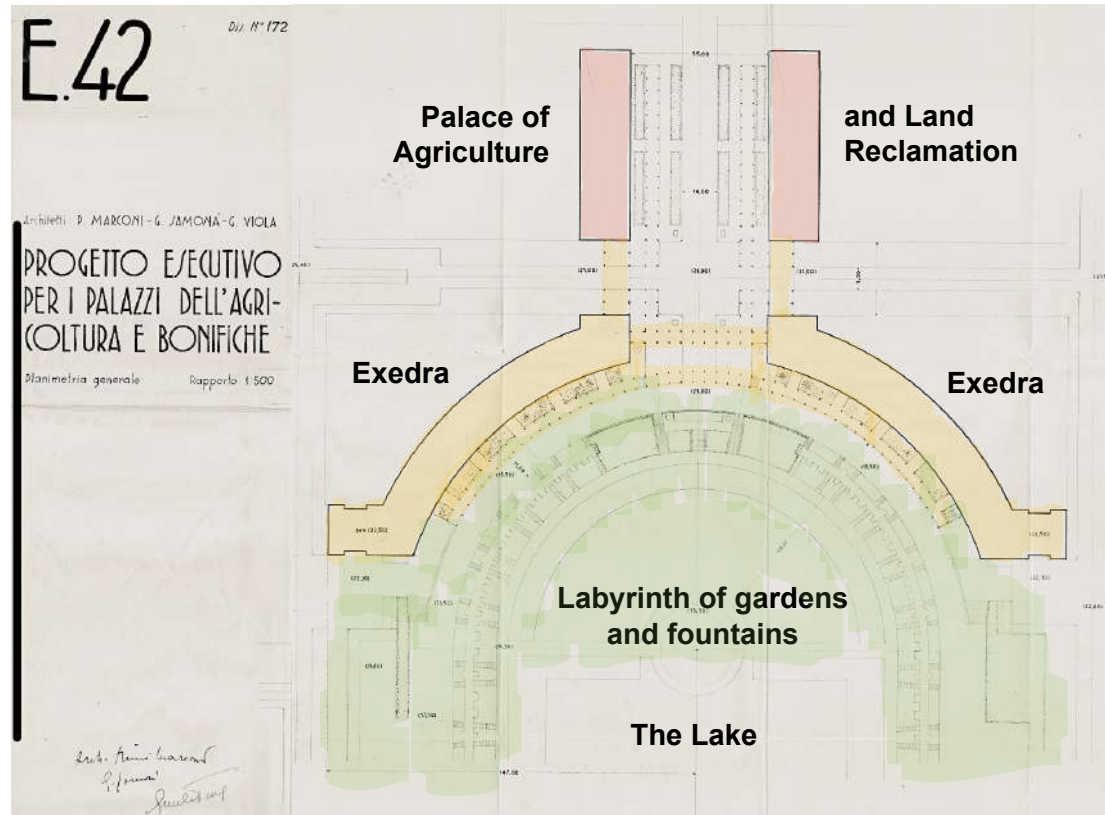


E.U.R. District (E42) Rome (Italy)
Palazzo dell'Agricoltura a Bonifiche



“On the left, the zone of the Lake terminates in a vast Exedra or crescent with a labyrinth of gardens and fountains, bounded by the Palace of Agriculture and Land Reclamation [...]”

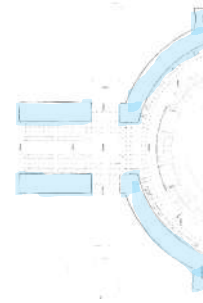
Gaetano Minnucci (1938)
Director of Services related to the Architecture, Parks and
Gardens of the E. 42



Task 1 Re-coupling history

Design Problem

A Troublesome Inheritance.
A Dissonant Heritage.

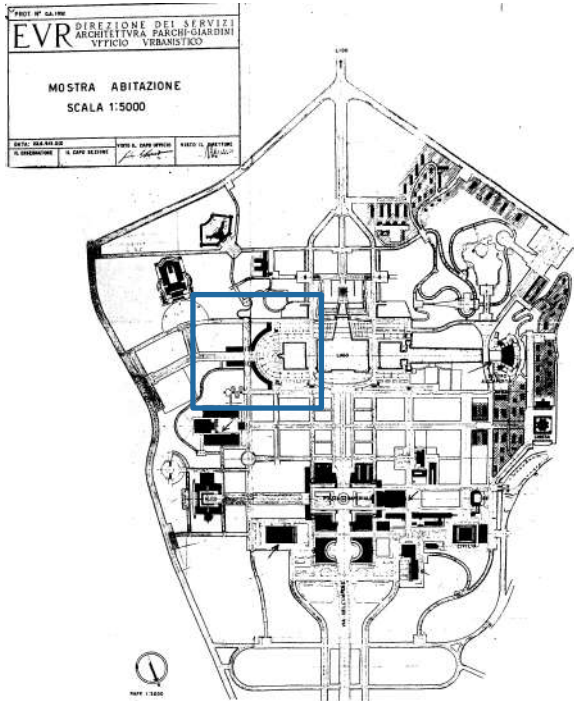


E.U.R. District (E42) Rome (Italy)
Palazzo dell'Agricoltura a Bonifiche

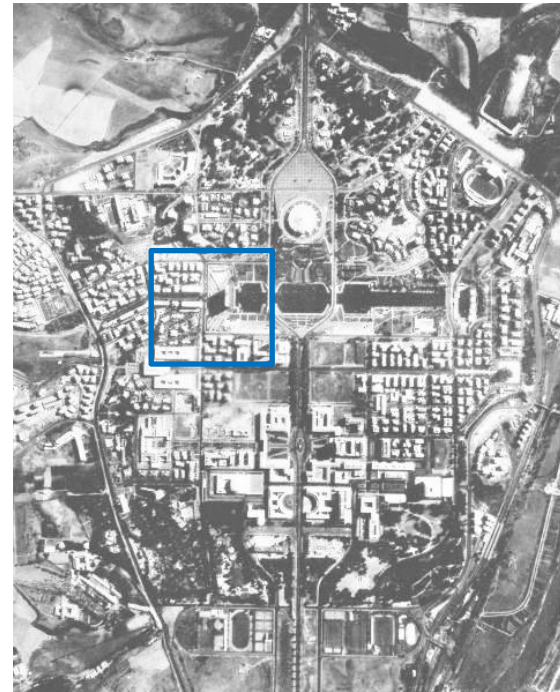


“The most grandiose and spectacular group of the E.42 will meet the gaze of the visitor on the shores of the Lake.”

Gaetano Minnucci (1938)
Director of Services related to the Architecture, Parks and Gardens of the E. 42



© Private Archive, EUR Spa



© Private Archive, EUR Spa

1941



1960s



2022



1941

Progresses, construction site
buildings on construction

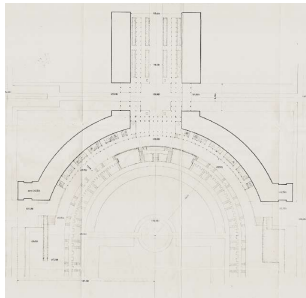
1960s

Areal picture, Post-WWII recovery
redevelopment of the site

The Skyscraper

Task 1 The ENI Skyscraper

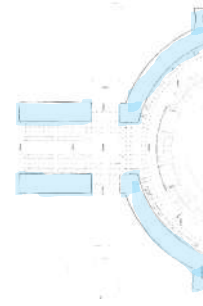
Design Problem



“On the left, the zone of the Lake terminates in a vast Exedra or crescent with a labyrinth of gardens and fountains, bounded by the Palace of Agriculture and Land Reclamation [...]”

Gaetano Minnucci (1938)

*Director of Services related to the Architecture,
Parks and Gardens of the E. 42*



E.U.R. District (E42) Rome (Italy)
Palazzo dell'Agricoltura a Bonifiche



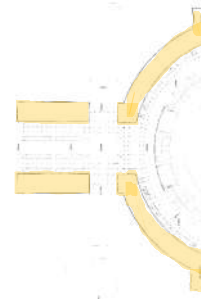
**A Troublesome Inheritance.
A Dissonant Heritage.**



Task 1

Palazzo Mostra dell'Agricoltura e Bonifiche (1939 – 1941)

Design Problem



E.U.R. District (E42) Rome (Italy)
Palazzo dell'Agricoltura a Bonifiche



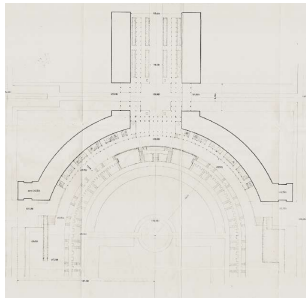
**A Troublesome Inheritance.
A Dissonant Heritage.**

**Listed as a Monument
(year, 2004)**

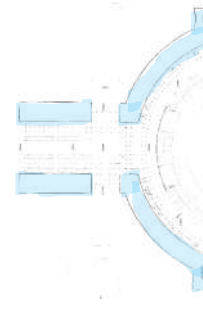


Task 1 Re-coupling history

Design Problem



HOW TO
RECONCILE
THE TWO
DESIGNS?



E.U.R. District (E42) Rome (Italy)
Palazzo dell'Agricoltura a Bonifiche

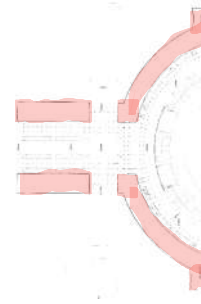


A Troublesome Inheritance.
A Dissonant Heritage.



Task 2 The missing Exedra

Design Problem

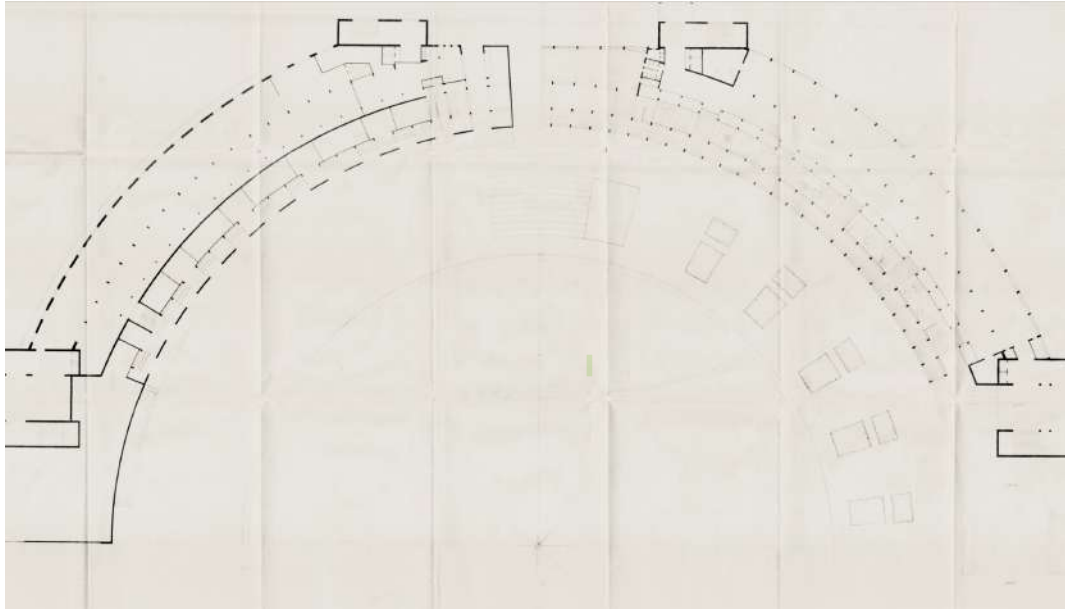


E.U.R. District (E42) Rome (Italy)
Palazzo dell'Agricoltura a Bonifiche

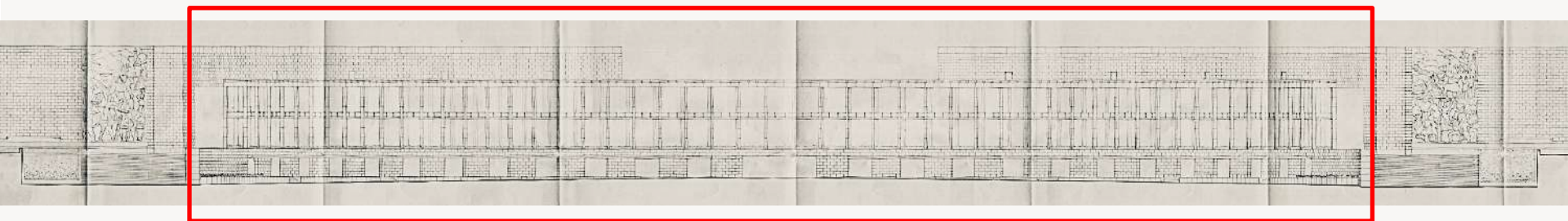
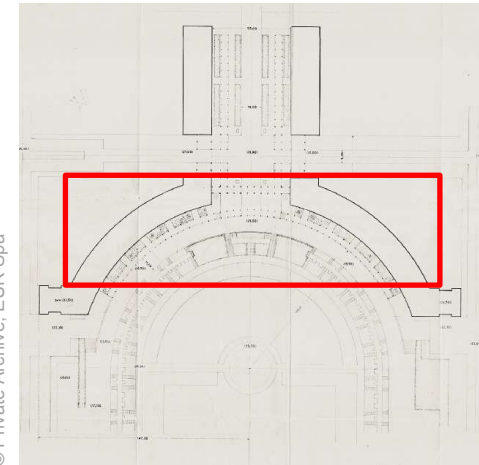


**A Troublesome Inheritance.
A Dissonant Heritage.**

© Private Archive, EUR Spa



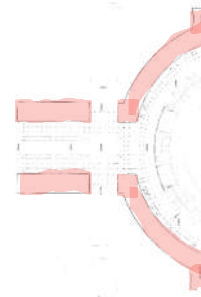
© Private Archive, EUR Spa



© Private Archive EUR Spa

Task 2 The missing Exedra

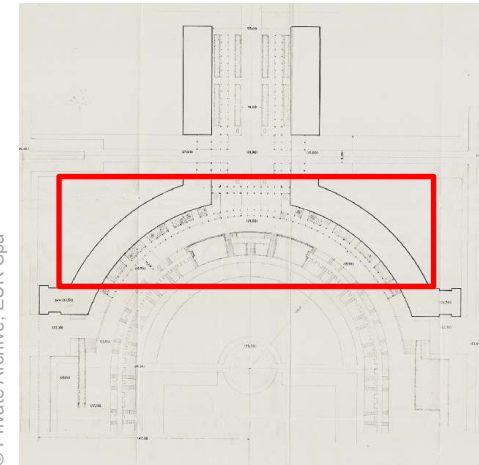
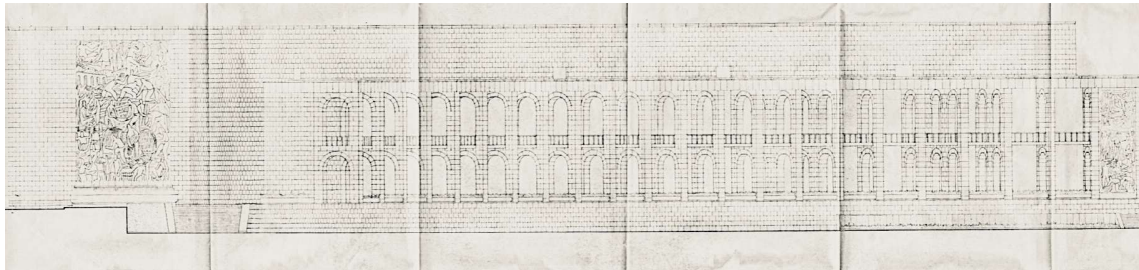
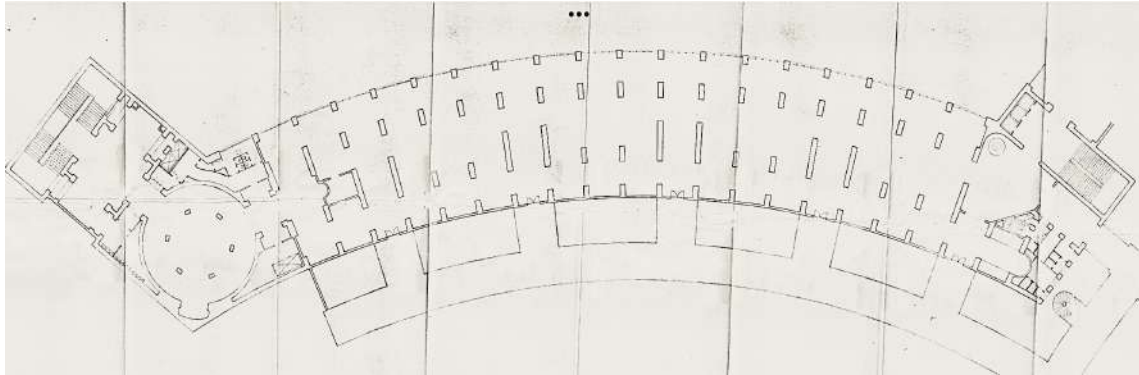
Design Problem



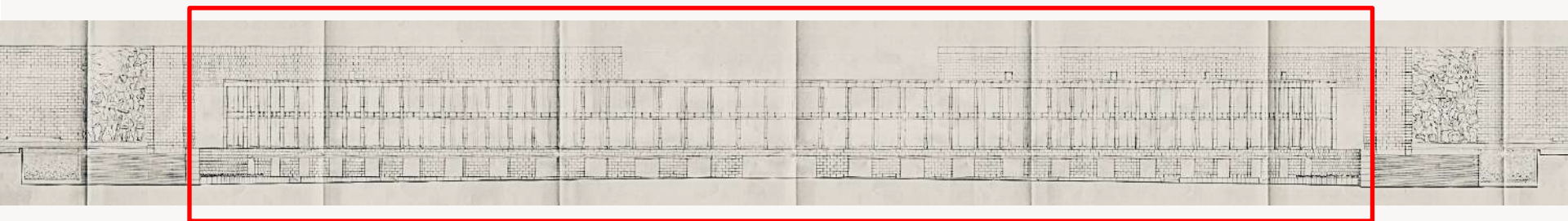
E.U.R. District (E42) Rome (Italy)
Palazzo dell'Agricoltura a Bonifiche



**A Troublesome Inheritance.
A Dissonant Heritage.**



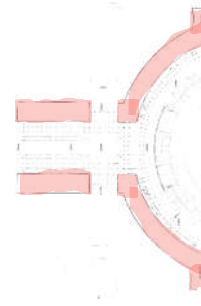
© Private Archive, EUR Spa



© Private Archive EUR Spa

Task 2 The missing Exedra

Design Problem



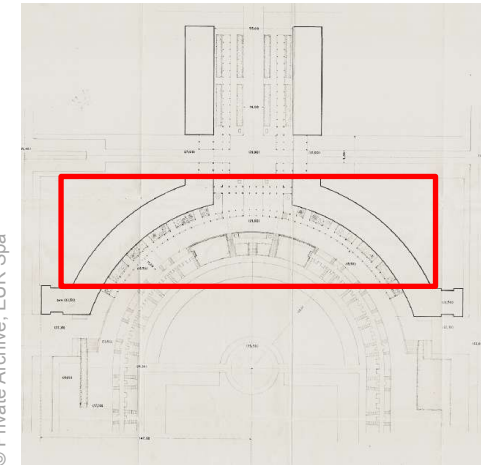
E.U.R. District (E42) Rome (Italy)
Palazzo dell'Agricoltura a Bonifiche



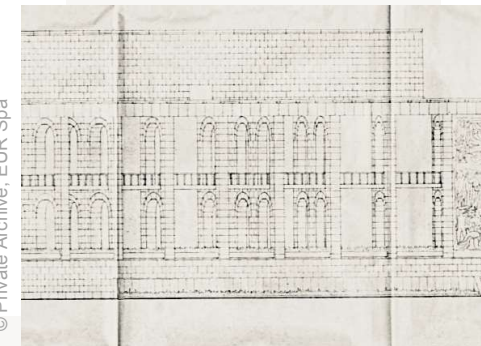
**A Troublesome Inheritance.
A Dissonant Heritage.**



© Private Archive, EUR Spa



© Private Archive, EUR Spa

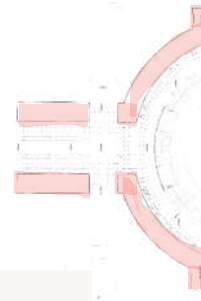


© Private Archive, EUR Spa

Task 3

The missing Ending Bodies and their Decorative apparatus

Design Problem



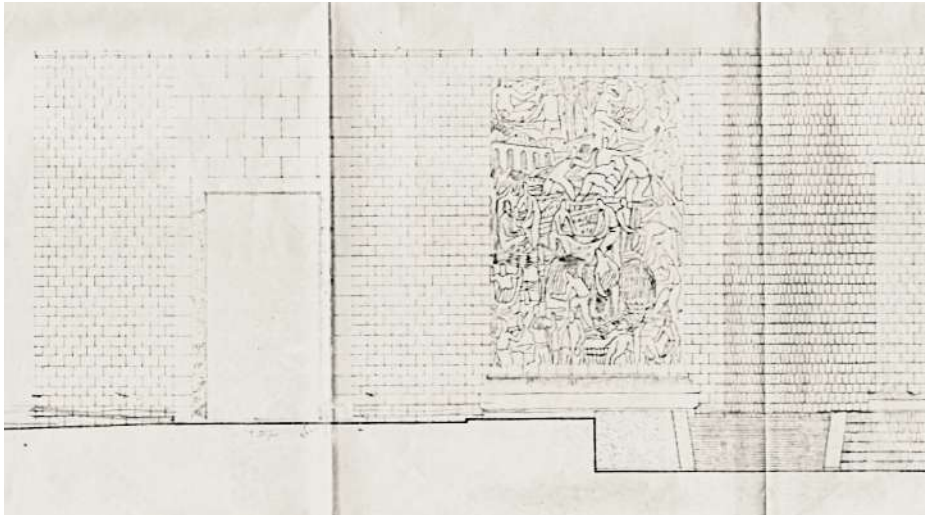
E.U.R. District (E42) Rome (Italy)
Palazzo dell'Agricoltura a Bonifiche



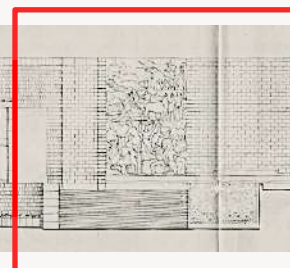
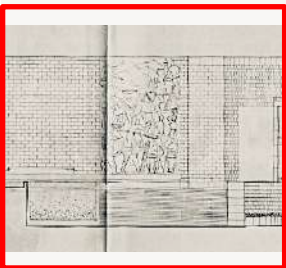
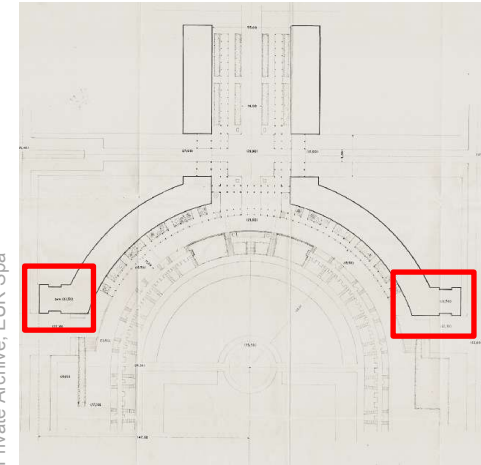
**A Troublesome Inheritance.
A Dissonant Heritage.**



© Private Archive, EUR Spa



© Private Archive, EUR Spa



© Private Archive EUR Spa

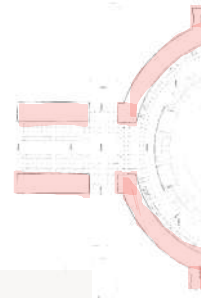
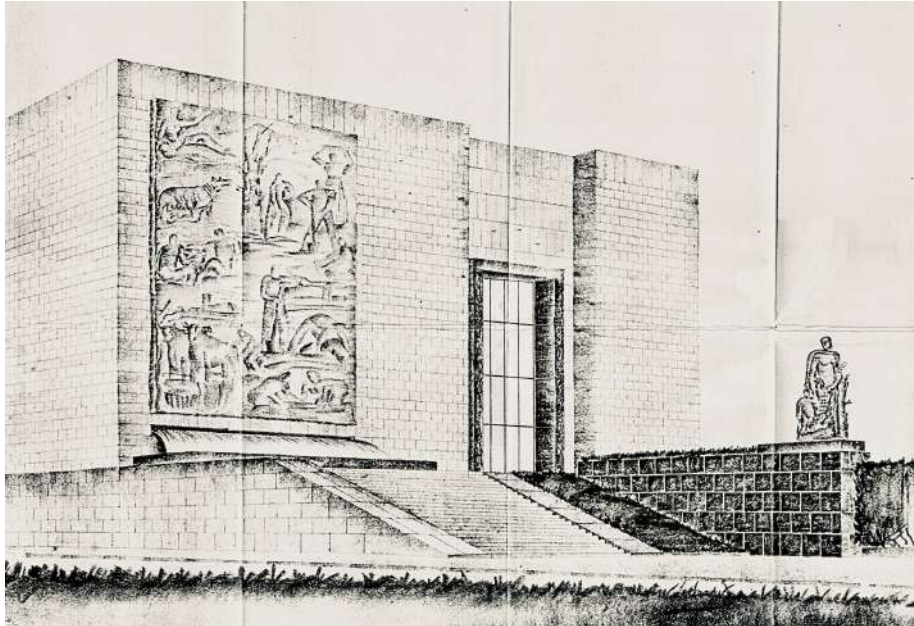
Task 3

The missing Ending Bodies and their Decorative apparatus

Design Problem



© Private Archive, EUR Spa

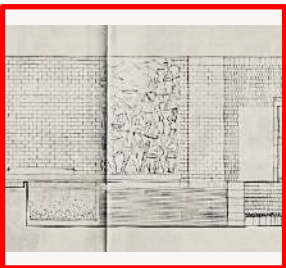
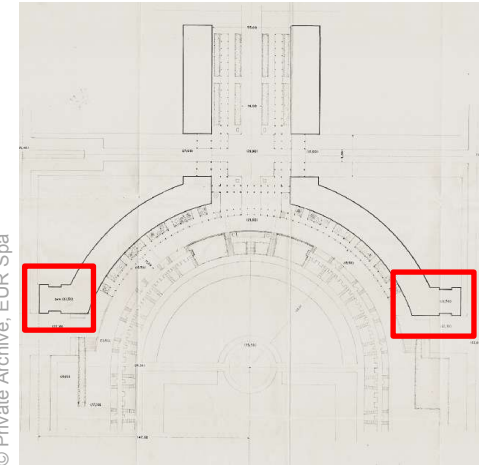


E.U.R. District (E42) Rome (Italy)
Palazzo dell'Agricoltura a Bonifiche

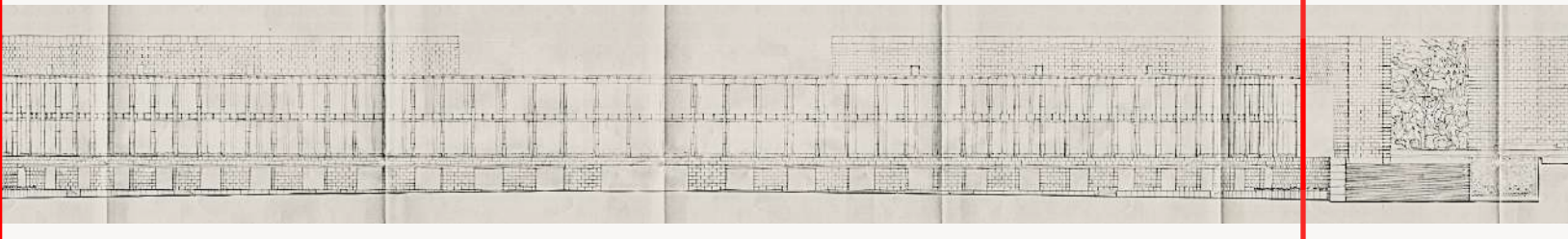


**A Troublesome Inheritance.
A Dissonant Heritage.**

© Private Archive, EUR Spa

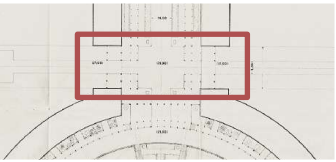


© Private Archive EUR Spa

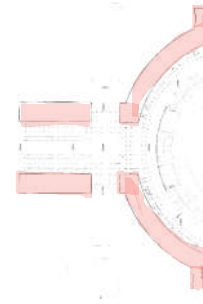


Task 4 The missing Bridges

Design Problem



© Private Archive EUR Spa



E.U.R. District (E42) Rome (Italy)
Palazzo dell'Agricoltura a Bonifiche



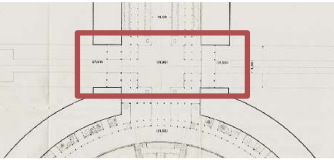
**A Troublesome Inheritance.
A Dissonant Heritage.**



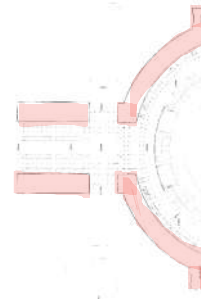
© Private Archive, EUR Spa

Task 4 The missing Bridges

Design Problem



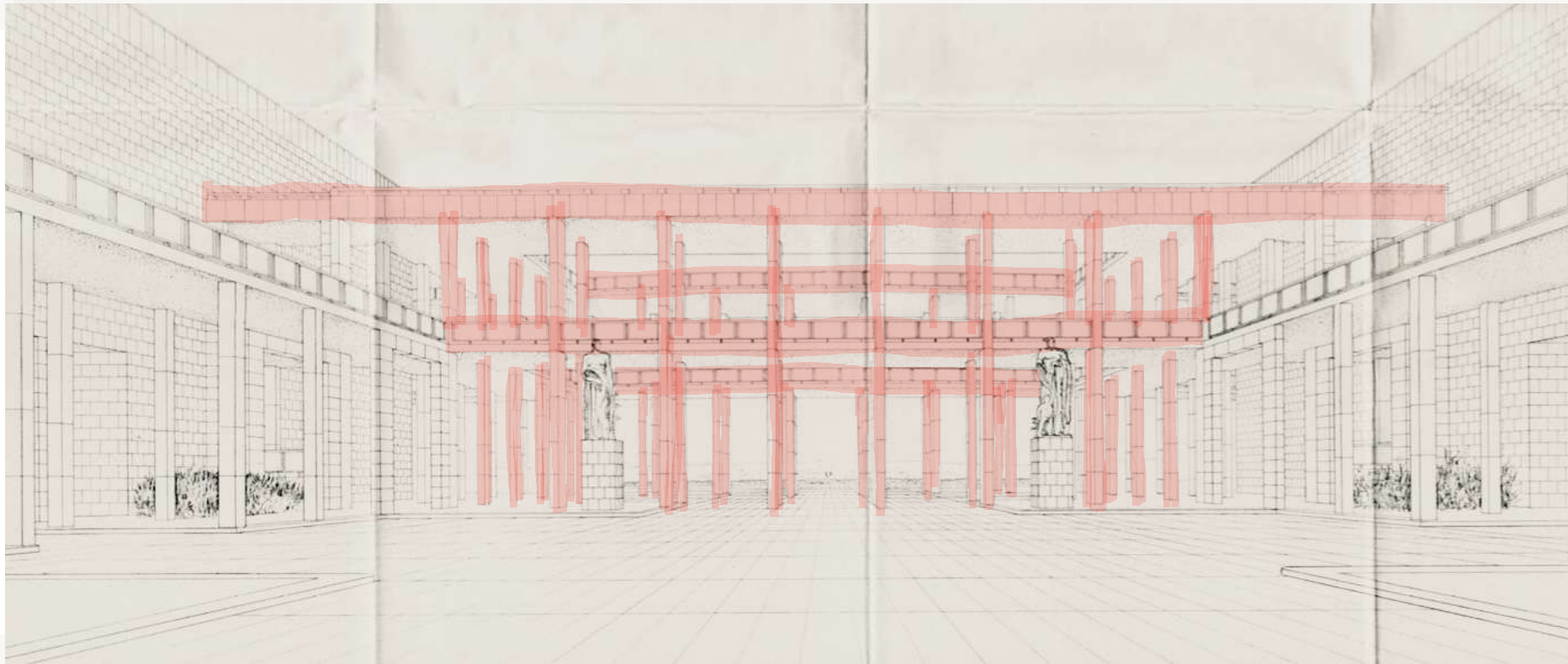
© Private Archive EUR Spa



E.U.R. District (E42) Rome (Italy)
Palazzo dell'Agricoltura a Bonifiche



**A Troublesome Inheritance.
A Dissonant Heritage.**

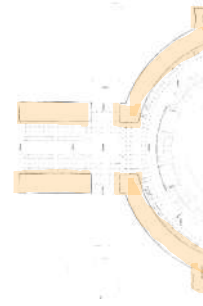


© Private Archive EUR Spa

Task 5 A repurposing strategy

Design Problem

The double height and the skylight
and the open space

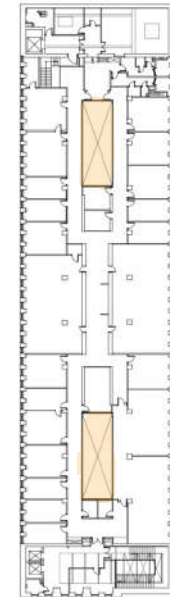


E.U.R. District (E42) Rome (Italy)
Palazzo dell'Agricoltura a Bonifiche



A Troublesome Inheritance.
A Dissonant Heritage.

Conservation Problem

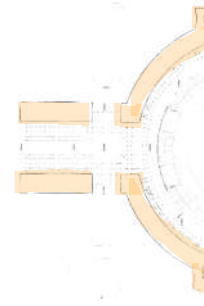


© Private Archive, EUR Spa

Task 5 A repurposing strategy

Design Problem

The double height and the skylight
and the open space

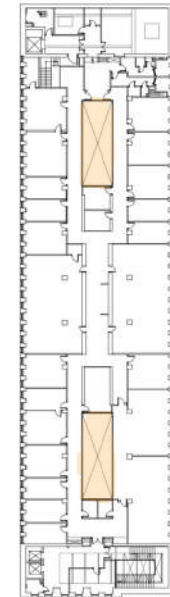


E.U.R. District (E42) Rome (Italy)
Palazzo dell'Agricoltura a Bonifiche



A Troublesome Inheritance.
A Dissonant Heritage.

Conservation Problem

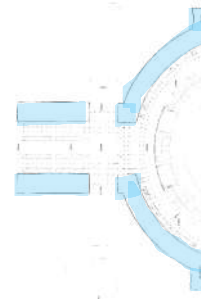


© Private Archive, EUR Spa

Task 5 A repurposing strategy

Design Problem

The Roof Terrace



E.U.R. District (E42) Rome (Italy)
Palazzo dell'Agricoltura a Bonifiche

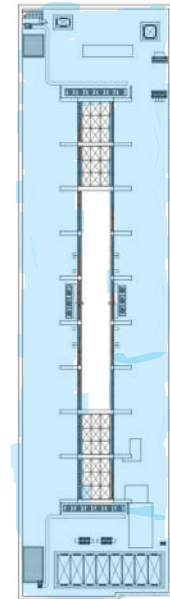


**A Troublesome Inheritance.
A Dissonant Heritage.**

Conservation Problem



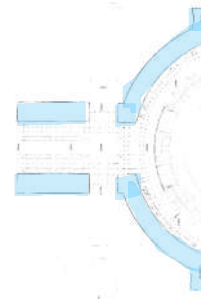
© Private Archive, EUR Spa



Task 5 A repurposing strategy

Design Problem

The Roof Terrace

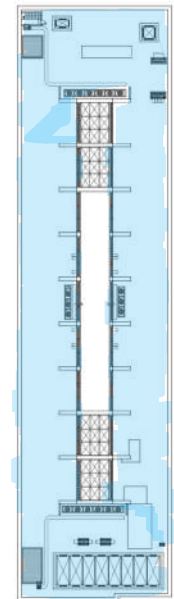


E.U.R. District (E42) Rome (Italy)
Palazzo dell'Agricoltura a Bonifiche



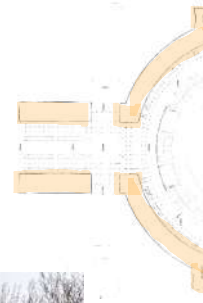
**A Troublesome Inheritance.
A Dissonant Heritage.**

Conservation Problem



© Private Archive, EUR Spa

Task 6 The Stone Cladding



E.U.R. District (E42) Rome (Italy)
Palazzo dell'Agricoltura a Bonifiche

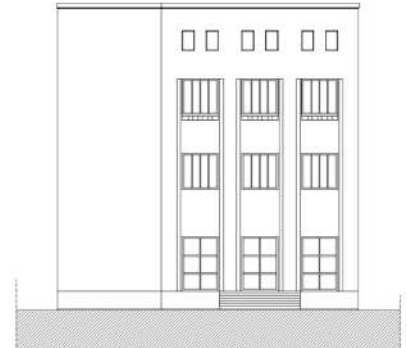


**A Troublesome Inheritance.
A Dissonant Heritage.**

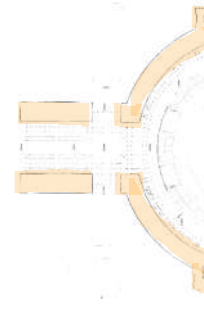
Conservation Problem



© Private Archive, EUR Spa



Task 6 The Metallic Frames

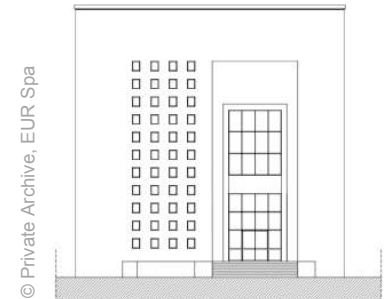


E.U.R. District (E42) Rome (Italy)
Palazzo dell'Agricoltura a Bonifiche



**A Troublesome Inheritance.
A Dissonant Heritage.**

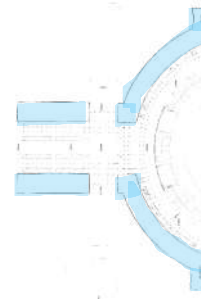
Conservation Problem



© Private Archive, EUR Spa



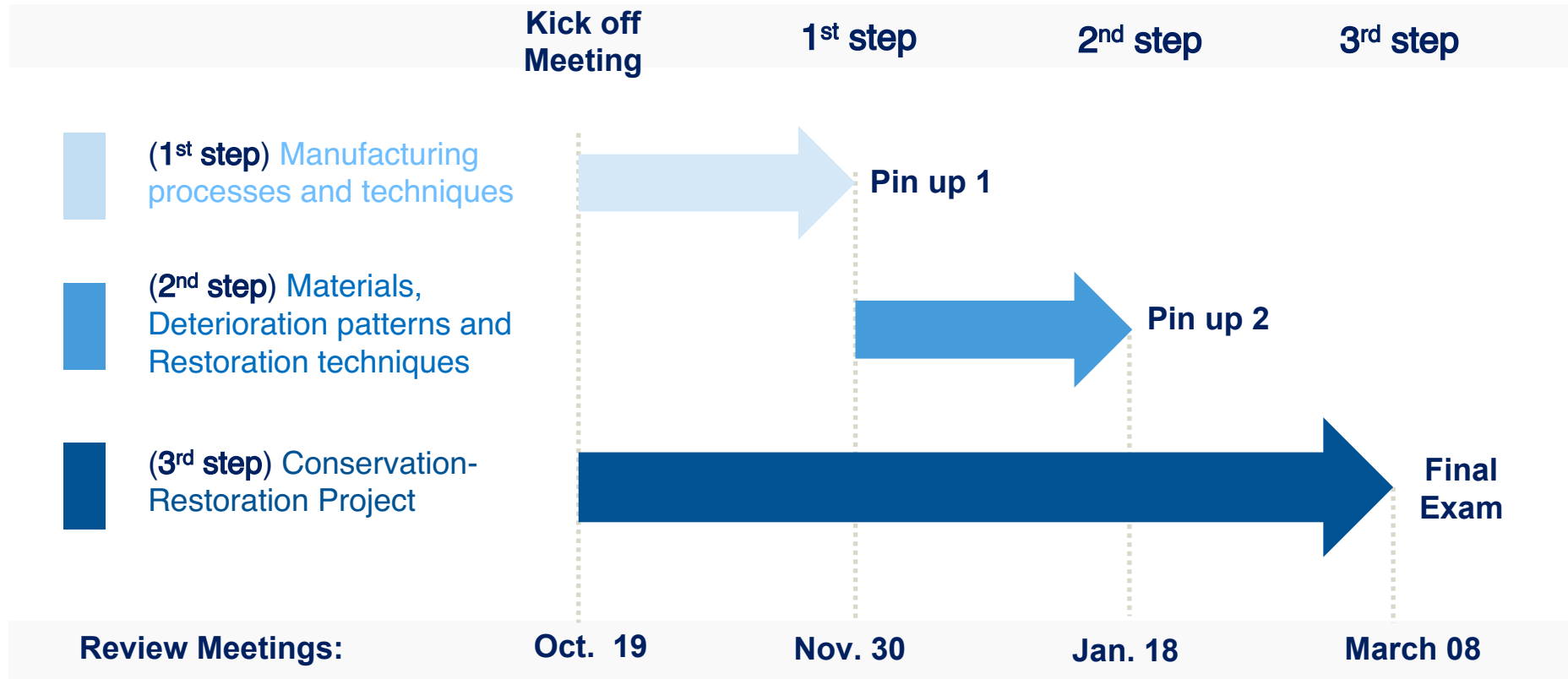
Time Schedule



E.U.R. District (E42) Rome (Italy)
Palazzo dell'Agricoltura a Bonifiche



**A Troublesome Inheritance.
A Dissonant Heritage.**



In collaboration with Arch. Francesco Innamorati at EUR Spa