

Title:	The Beauty of Architectural surfaces Niemals nur oberflächlich! <i>Zu Material, Technik und Ästhetik von Architekturoberfläche. Eine Einführung</i> Case study: The remains of the Medieval City of NINFA, Latina, Italy <i>Das Paradies heißt Ninfa – The most Romantic Garden in the World</i>
Chair:	Chair of Conservation-Restoration , Art Technology and Conservation Science Prof. Dr. Thomas Danzl Arch. Dr. Roberta Fonti
Language:	English support (i.e. learning materials in English, German and Italian, individual review meetings in English)
Study level:	Bachelor
Kick off:	18/04/2023
Meetings:	Every Tuesday , frontal lectures – Room, 0503.01.345 Main Campus All week long , Design Studio's space – Main Campus
Interm. Reviews:	16/05; 26/06
Final Presentation:	08/08
ECTS:	Credits (9 ECTS)
Remarks:	Excursion to NINFA (Italy), 30 May - 04 June 2023 in collaboration with Prof. Daniela Esposito at the University of Rome "La Sapienza" „Roffredo Caetani Foundation“ which is managing the site of Ninfa

The Medieval City of NINFA *House of Caetani* – Latina, Italy



The Medieval City of NINFA *House of Caetani* – Latina, Italy

Archeological Site



© University of Rome "La Sapienza"
(with the courtesy of Prof. D. Esposito)



**The Pontine Marshes
Land (year, 1910)**

An Historical Garden called NINFA *House of Caetani* – Latina, Italy



Step 3

The Garden

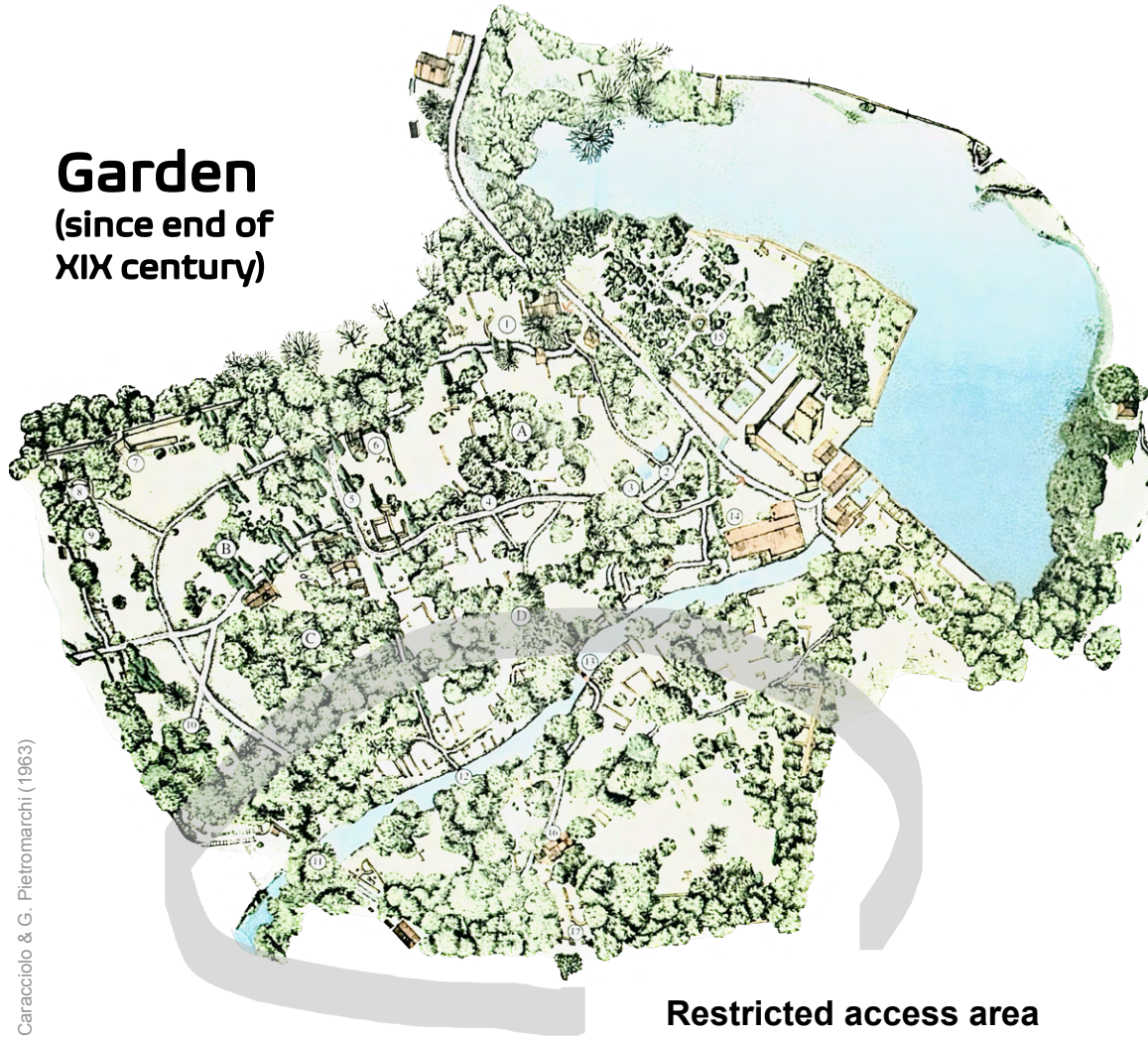
An Historical Garden called NINFA *House of Caetani* – Latina, Italy



The remains of the Medieval city of NINFA
& The House of Caetani's Garden



Garden (since end of XIX century)

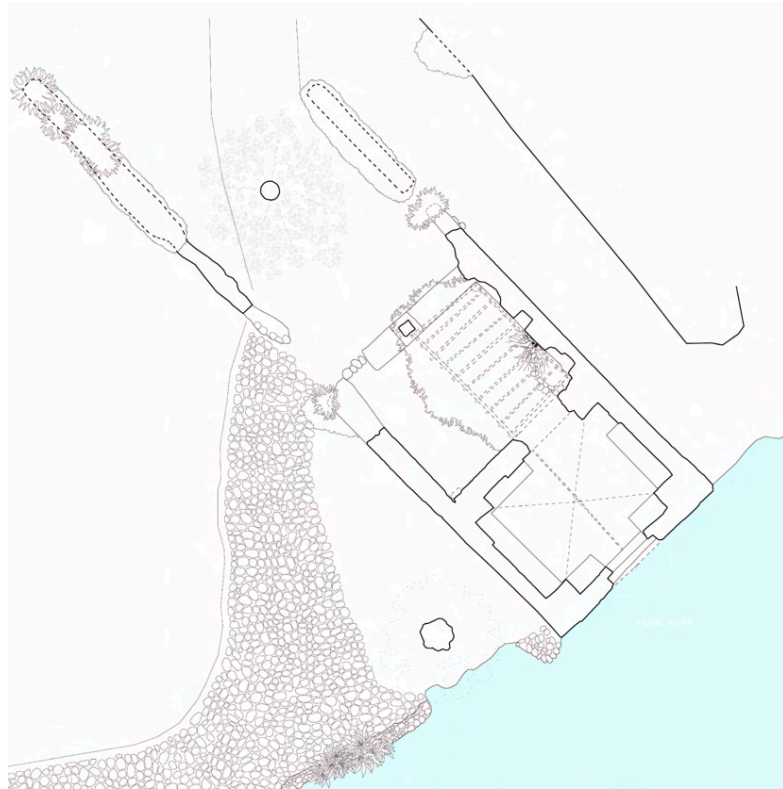
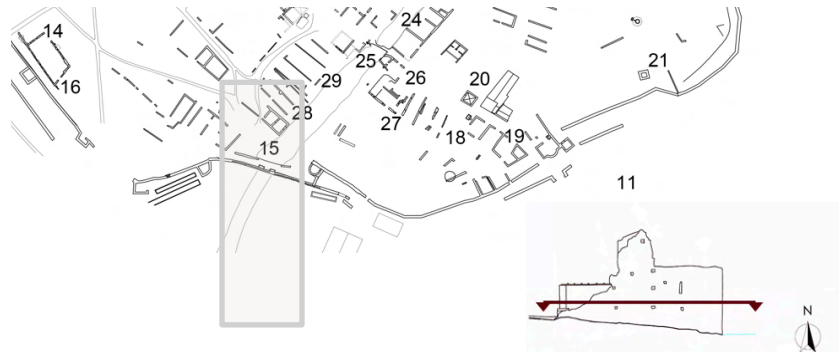


© M. Caracciolo & G. Pietromarchi (1963)

Restricted access area

Step 3

A selection of remains
to enhance!



© University of Rome "La Sapienza"
(with the courtesy of Prof. D. Esposito)

© Charles Quest-Ritson (2009) p. 44

The remains of the Medieval city of NINFA
& The House of Caetani's Garden



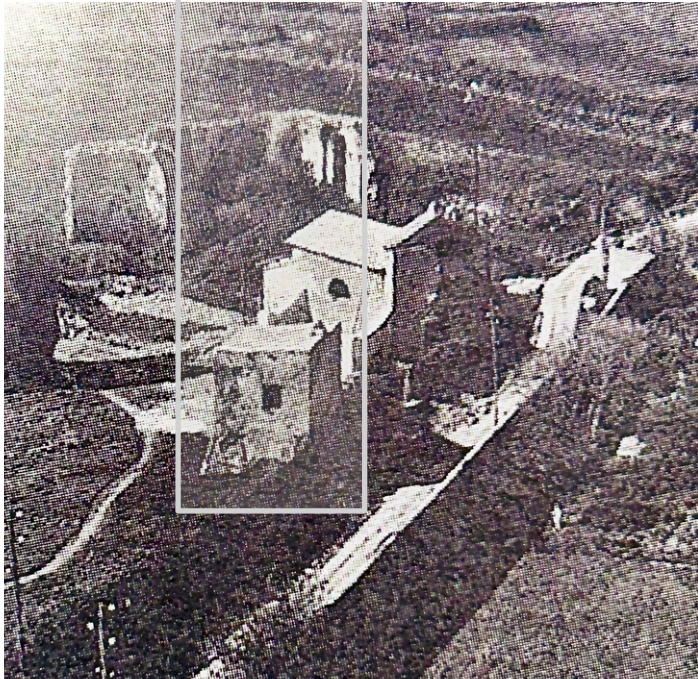
Prince Gelasio's reading and writing room



Step 3

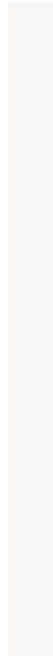
A selection of remains
to enhance!

The remains of the Medieval city of NINFA
& The House of Caetani's Garden



© M. Caracciolo & G. Pietromarchi (1963) p. 101

Year, 1920s - plaster and no greenery

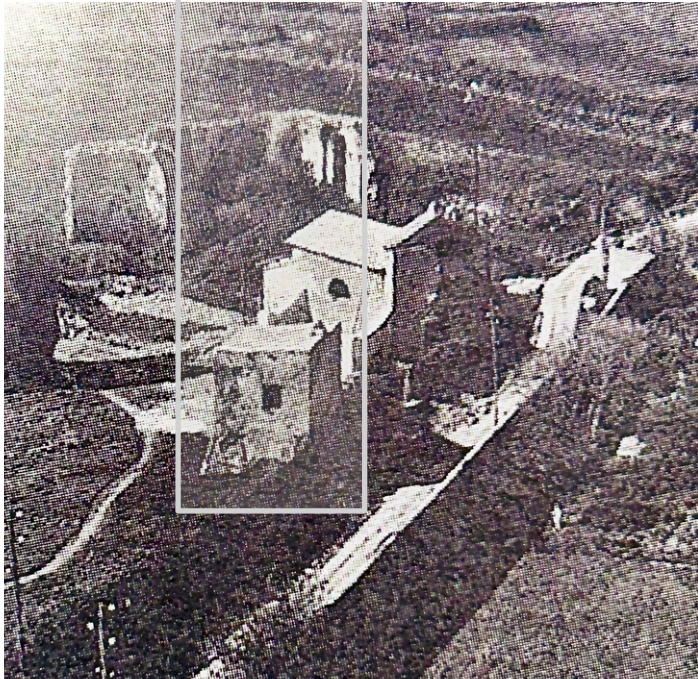


Year, 2020s – no plaster and greenery

Step 3

A selection of remains
to enhance!

The remains of the Medieval city of NINFA
& The House of Caetani's Garden



© M. Caracciolo & G. Pietromarchi (1963) p. 101

Year, 1920s - plaster and no greenery

"The greenery is taking over and little by little the built is turn into remains depicting the most romantic garden of all times."



Year, 2020s – the partial collapse of a Quoin

WHAT TO DO?

SAVING THE GREENERY OR THE REMAINS?

Conservation or Restoration?



“The greenery is taking over and little by little the built is turn into remains depicting the most romantic garden of all times.”

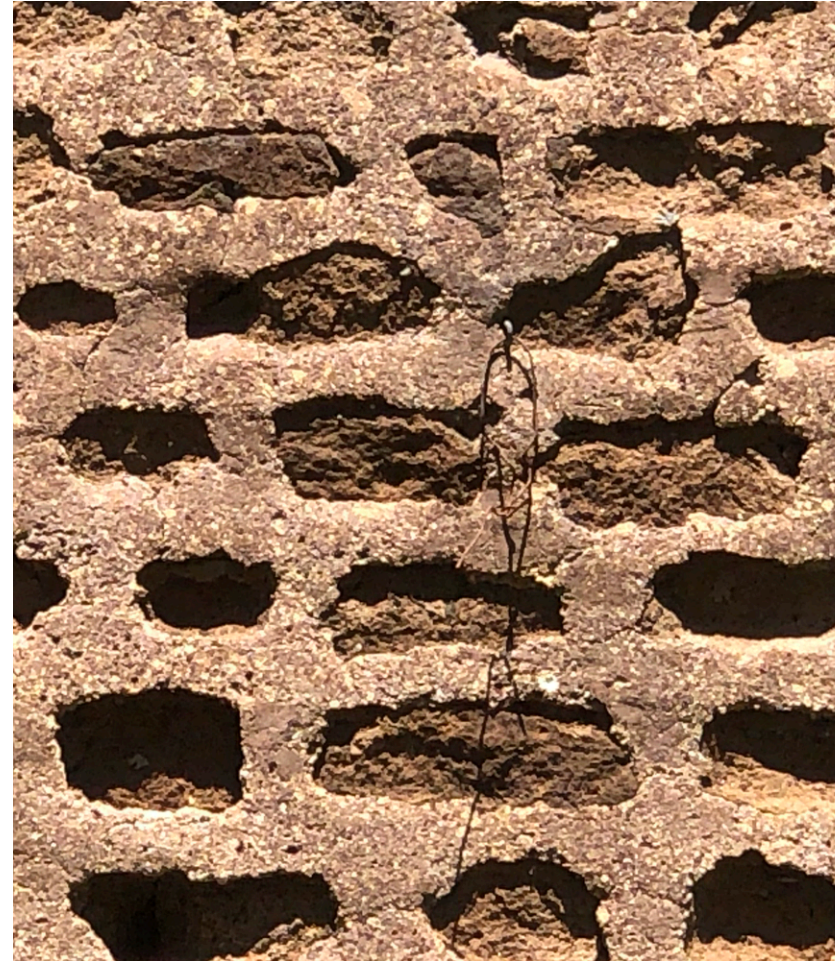


Year, 2020s – the partial collapse of a Quoin

Step 1

Manufacturing Techniques

The remains of the Medieval city of NINFA
& The House of Caetani's Garden



Step 2

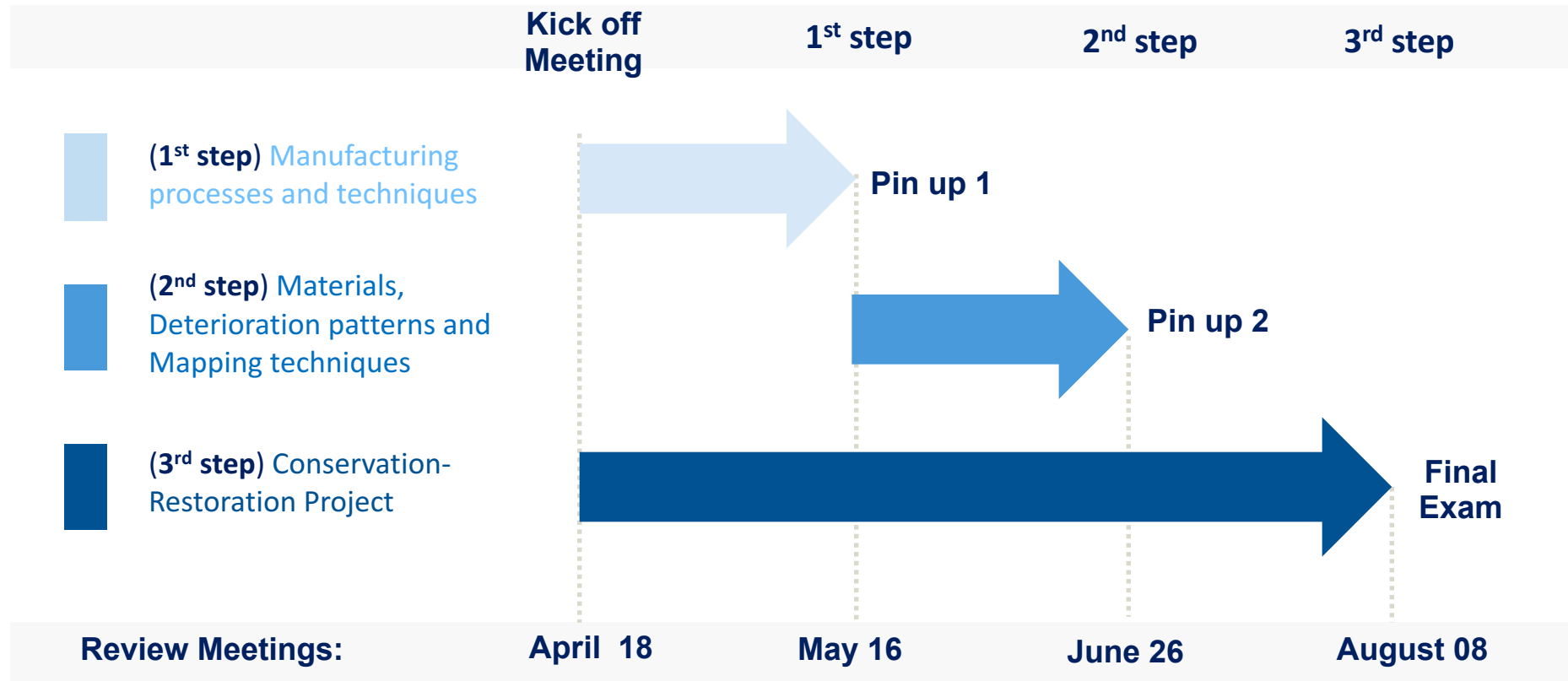
Deterioration Patterns of Materials

The remains of the Medieval city of NINFA
& The House of Caetani's Garden



Time Schedule

The remains of the Medieval city of NINFA
& The House of Caetani's Garden



In collaboration with

Prof. Daniela Esposito, Chair of Conservation-Restoration at University of Rome *La Sapienza*
Foundation “Roffredo Caetani”, *non confunditur* in Sermoneta